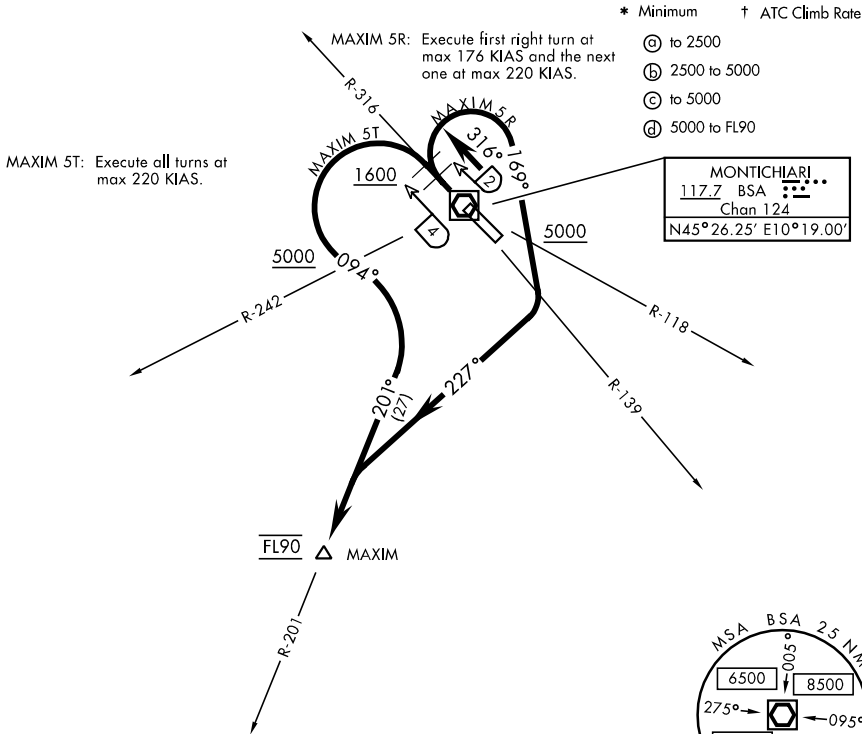


MONTICHIARI TOWER ★  
119.4  
GARDA APP CON  
124.45 292.7

Rwy	Knots	60	120	180	240	300	360
*5R (a)	V/V(fpm)	330	660	990	1320	1650	1980
†5R (b)	V/V(fpm)	350	700	1050	1400	1750	2100
†5T (c)	V/V(fpm)	300	600	900	1200	1500	1800
†5T (d)	V/V(fpm)	350	700	1050	1400	1750	2100



RADAR REQUIRED

TA 6000



DEPARTURE ROUTE DESCRIPTION

**MAXIM 5R (CAT A-B-C):** Climb straight ahead and intercept BSA R-316 to 2 DME. Turn right on DR heading 169°, (Cross BSA R-118 at or above 5000) when passing BSA R-139 turn right on DR heading 227° intercept BSA R-201 to MAXIM int. Cross MAXIM at FL90.

**MAXIM 5T (CAT D):** Climb straight ahead and intercept BSA R-316 to 4 DME, cross 4 DME at or above 1600. Turn left on DR heading 094°, cross BSA R-242 at or above 5000. Turn right, intercept BSA R-201 to MAXIM int. Cross MAXIM at FL90.