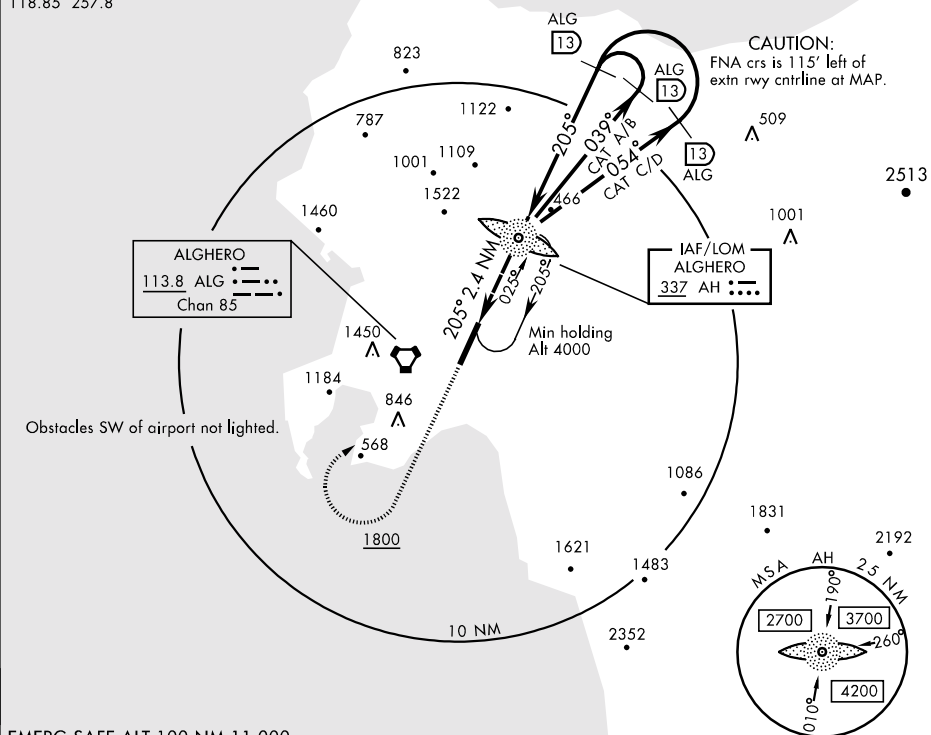


LO RWY 21

ALGHERO (LIEA)

ALGHERO, ITALY

ALGERO APP CON
128.55 258.85
ALGERO TOWER
118.85 257.8



EMERG SAFE ALT 100 NM 11,000

MISSED APPROACH

TA 5000

Proceed on track 205° and climb to 1800 then turn right to AH LOM, climbing to 3000.

LOM 039° CAT A/B 2.5 min 13
054° CAT C/D 1.5 min

VORTAC

NOTE: FLY visual to airport

205° 2.4 NM

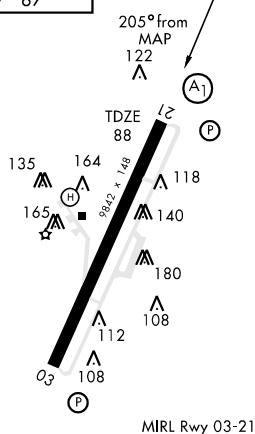
2.4 NM 1 NM

CATEGORY	A	B	C	D
CIRCLING *	1100-4800m	1013	(1100-4800m)	

T

* Circling not authorized W of Rwy 03-21.
Circling to Rwy 03 not authorized at night.

ELEV 87



MIRL Rwy 03-21

FAF to MAP 1.0 NM

Knots	60	90	120	150	180
Min:Sec	1:00	0:40	0:30	0:24	0:20

LO RWY 21

40°38'N-08°17'E

ALGHERO, ITALY
ALGHERO (LIEA)