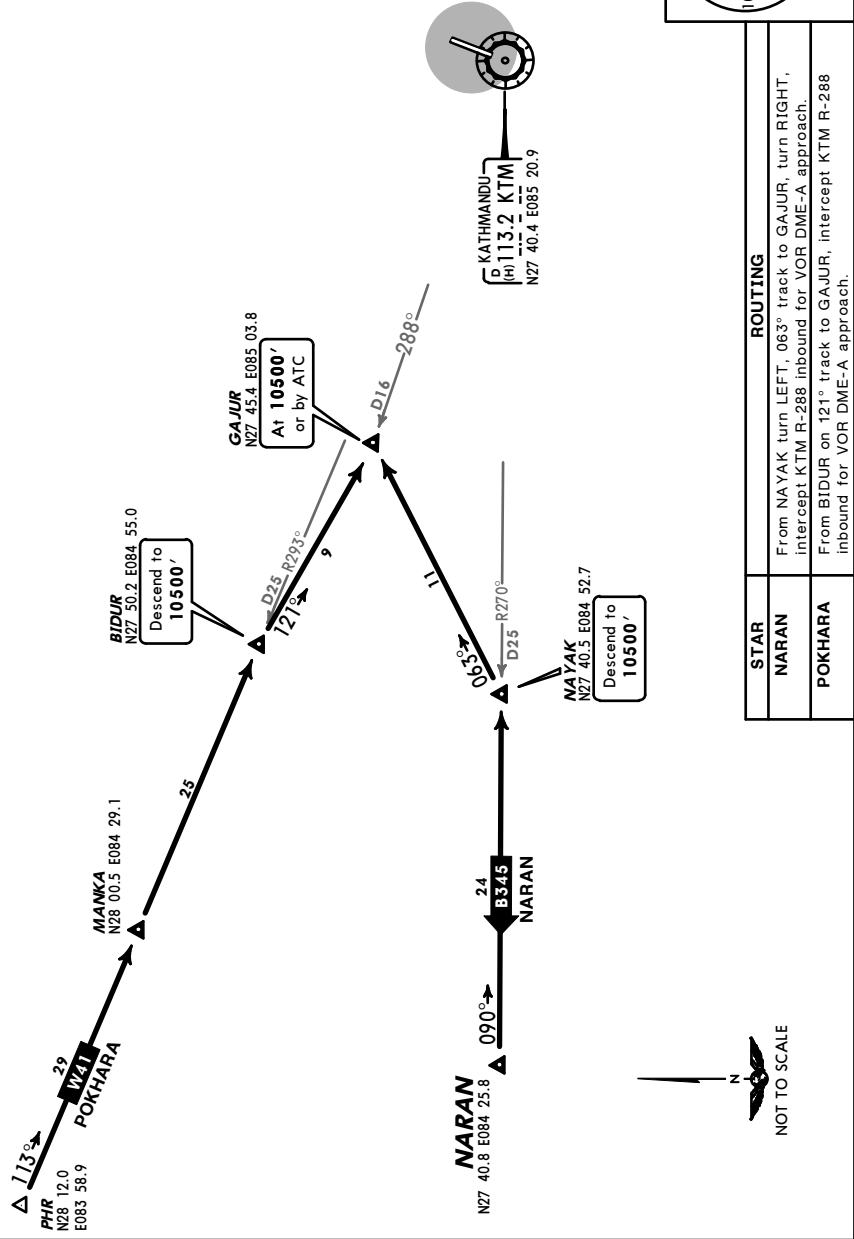
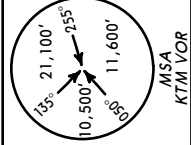


*ATIS
127.0

Apt Elev
4395'

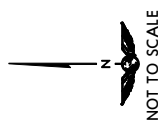
Alt Set: hPa Trans level: FL150 Trans alt: 13500'

NARAN
POKHARA [PHR]
ARRIVALS



KATHMANDU
(H) 113.2 KTM
N27 40.4 E085 20.9

ROUTING	
STAR	
NARAN	From NAYAK turn LEFT, 063° track to GAJUR, turn RIGHT, intercept KTM R-288 inbound for VOR DME-A approach.
POKHARA	From BIDUR on 121° track to GAJUR, intercept KTM R-288 inbound for VOR DME-A approach.

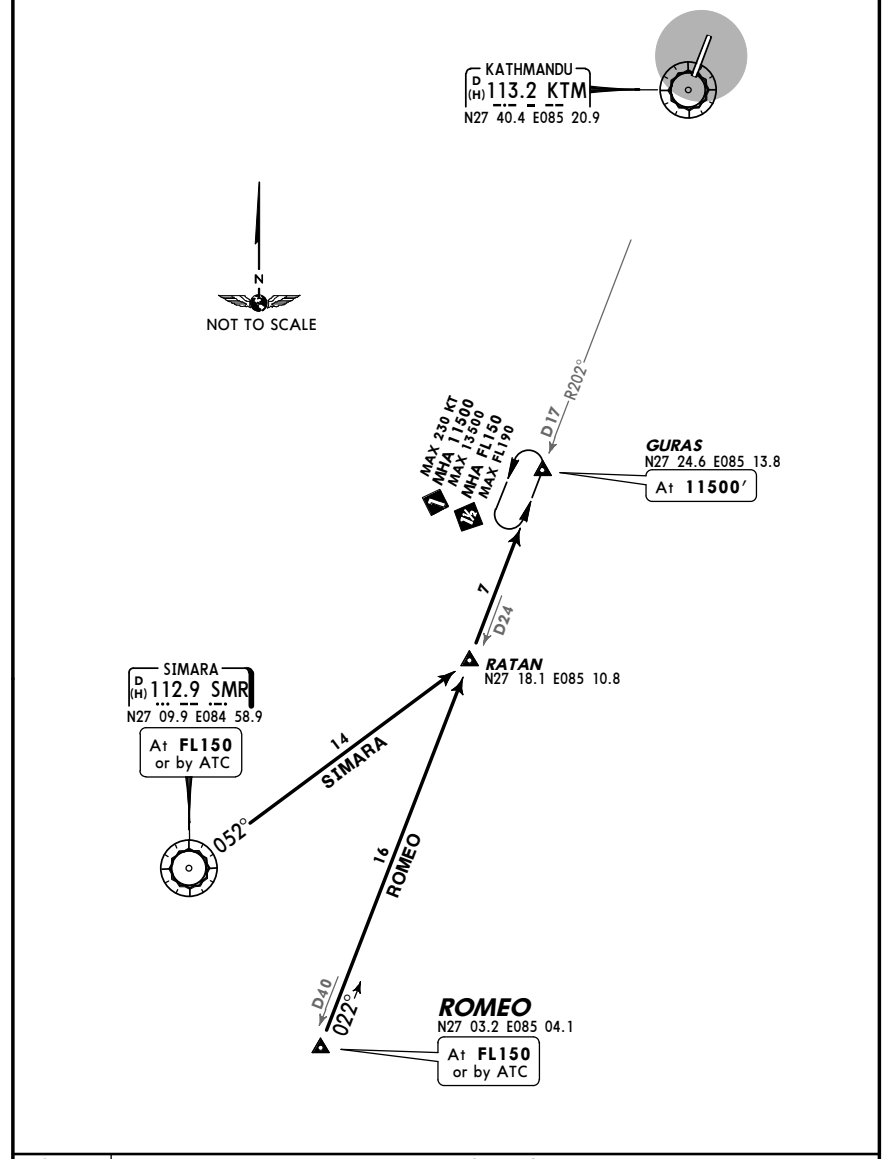
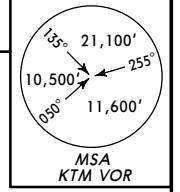


*ATIS
127.0

Apt Elev
4395'

Alt Set: hPa Trans level: FL150 Trans alt: 13500'

ROMEO, SIMARA [SMR]
ARRIVALS

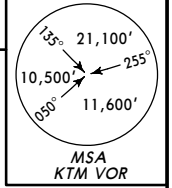


KATHMANDU
(H) 113.2 KTM
N27 40.4 E085 20.9

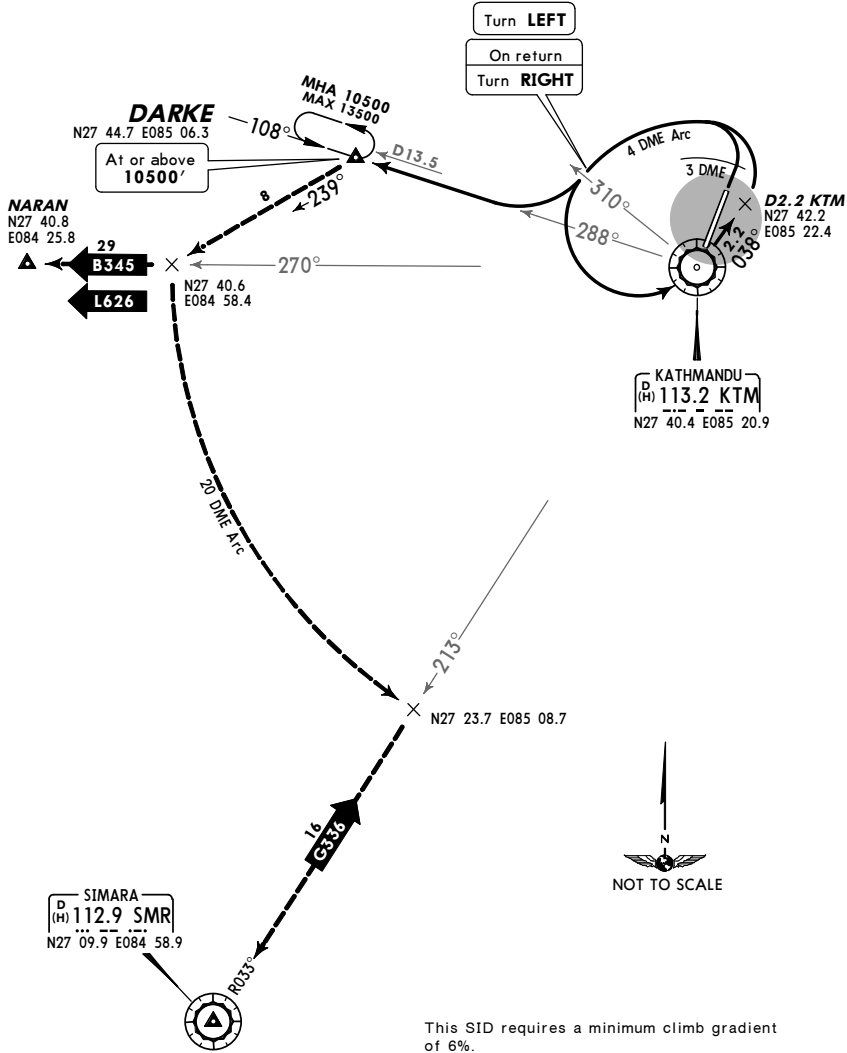


STAR	ROUTING
ROMEO	At ROMEO turn RIGHT, intercept KTM R-202 inbound to RATAN, then to GURAS.
SIMARA	On SMR R-052 to RATAN, intercept KTM R-202 inbound to GURAS.

Apt Elev 4395' Trans level: FL150 Trans alt: 13500'



**DARKE 1E [DARKIE]
RWY 02 DEPARTURE**



This SID requires a minimum climb gradient of 6%.

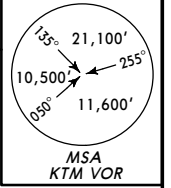
Gnd speed-KT	75	100	150	200	250	300
6% V/V (fpm)	456	608	911	1215	1519	1823

Turns are limited to MAX 180 KT.

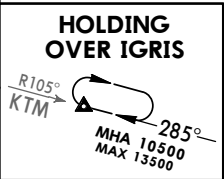
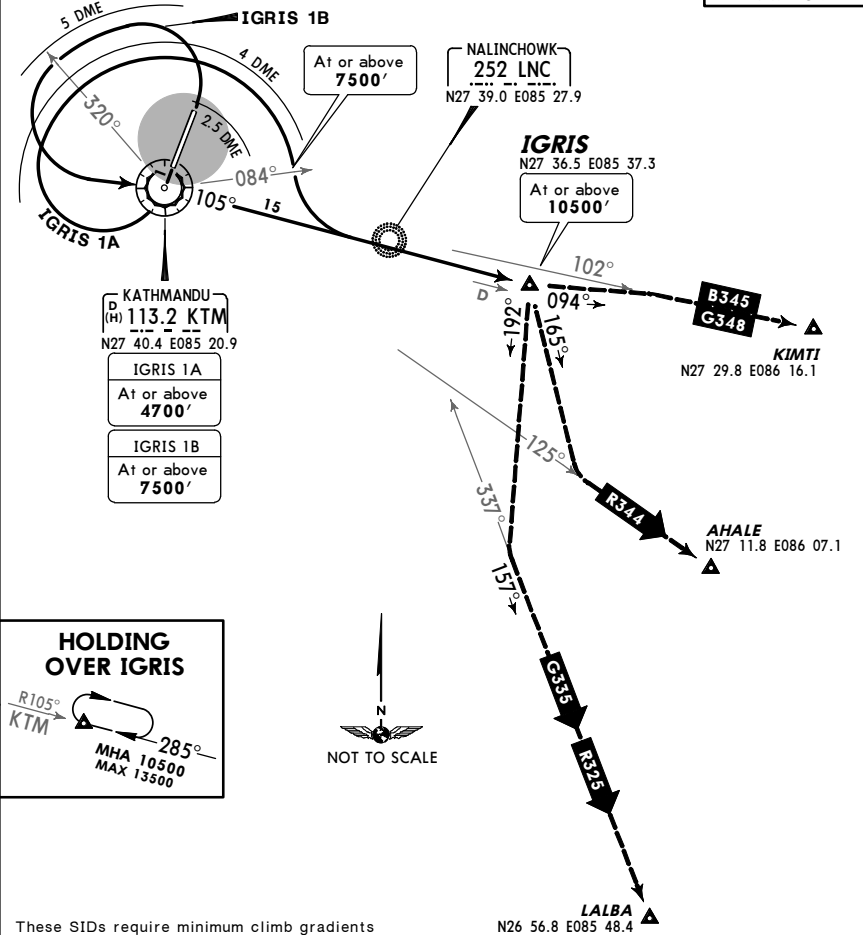
ROUTING

Climb straight ahead to KTM 3 DME, turn LEFT, along KTM 4 DME arc, when crossing KTM R-310 turn LEFT to KTM, KTM R-038 to D2.2 KTM, turn LEFT, along KTM 4 DME arc, at KTM R-310 turn RIGHT, intercept KTM R-288 to DARKE, continue climb to MEA.

Apt Elev 4395' Trans level: FL150 Trans alt: 13500'



**IGRIS 1A [IGRI1A], IGRIS 1B [IGRI1B]
RWYS 20, 02 DEPARTURES**



These SIDs require minimum climb gradients of

- IGRIS 1A: 6%.
- IGRIS 1B: 8%.

Gnd speed-KT	75	100	150	200	250	300
8% V/V (fpm)	608	810	1215	1620	2025	2430
6% V/V (fpm)	456	608	911	1215	1519	1823

Turns are limited to MAX 180 KT.

ROUTING

SID	RWY	ROUTING
IGRIS 1A	20	Climb straight ahead to KTM, turn RIGHT (remaining within KTM 4 DME), when crossing KTM R-084 turn LEFT, intercept KTM R-105 to IGRIS, continue climb to MEA.
IGRIS 1B	02	Climb straight ahead to KTM 2.5 DME, turn LEFT (remaining within KTM 5 DME), when passing KTM R-320 turn LEFT to KTM, KTM R-105 to IGRIS, continue climb to MEA.

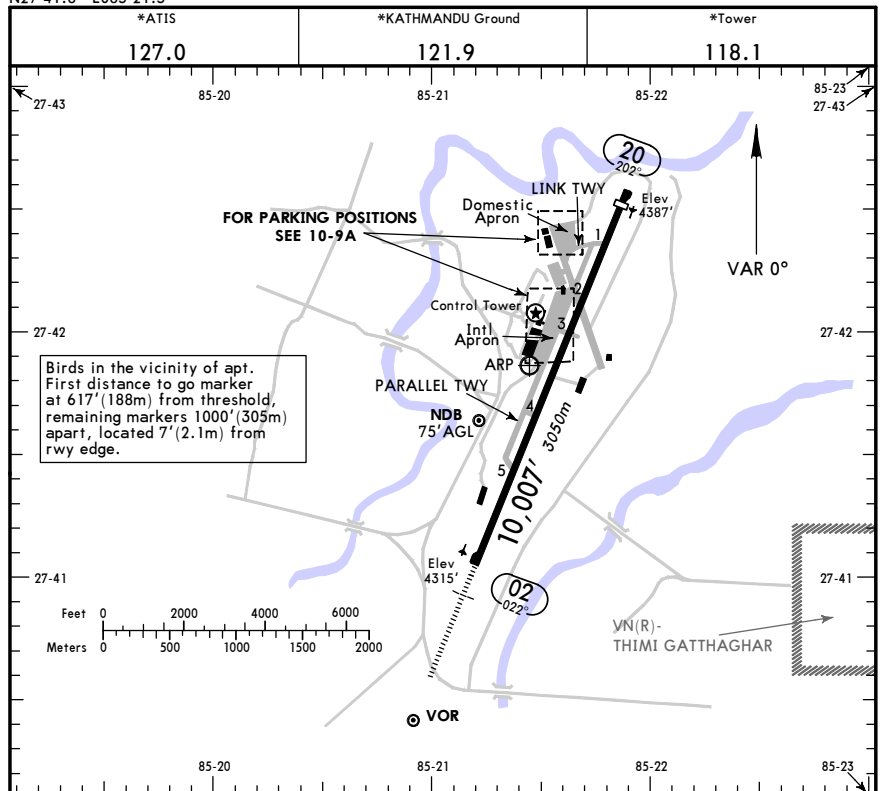
VNKT/KTM

Apt Elev 4390'
N27 41.8 E085 21.5

KATHMANDU, NEPAL

TRIBHUVAN INTL

21 OCT 11 (10-9)



ADDITIONAL RUNWAY INFORMATION

RWY		USABLE LENGTHS			WIDTH
		Threshold	Landing Beyond Glide Slope	TAKE-OFF	
02	HIRL HIALS PAPI-L (angle 3.0°)				150'
20	HIRL PAPI-L (angle 3.0°)	9613'	2930m		46m

TAKE-OFF

	All Rwy's	
	JET	TURBOPROP
2 Eng	800m	1 & 2 Eng 1600m
3 & 4 Eng		3 & 4 Eng 800m

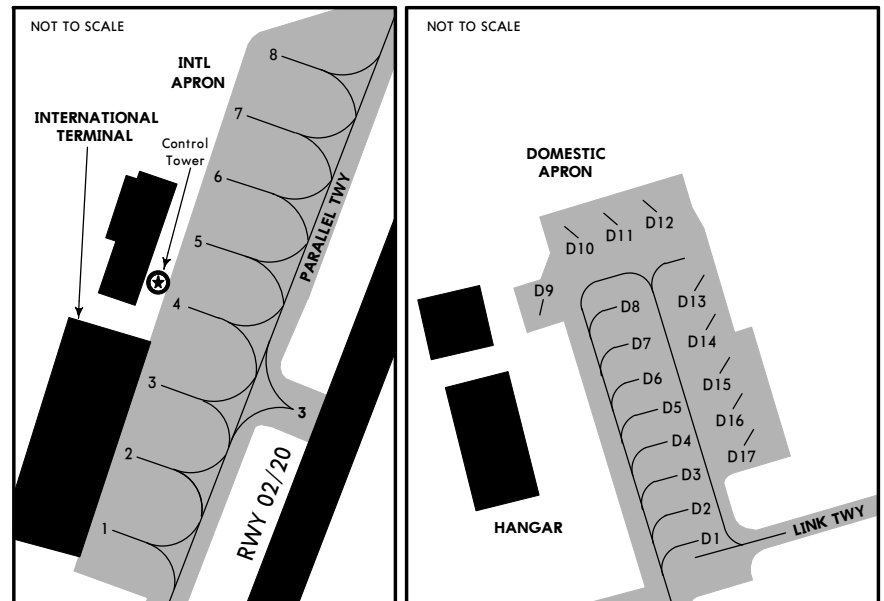
CHANGES: None.

VNKT/KTM

KATHMANDU, NEPAL

TRIBHUVAN INTL

21 OCT 11



CHANGES: Coordinates withdrawn.

VNKT/KTM

 4 MAR 11 **10-9S** Eff 10 Mar **Standard**
KATHMANDU, NEPAL
 TRIBHUVAN INTL

STRAIGHT-IN RWY		A	B	C	D
02	VOR ①②	4950' (635')	4950' (635')	4950' (635')	4950' (635')
		2200m	2200m	2800m	3200m
	ALS out	2900m	2900m	3200m	3600m

- ① Missed apch climb grad mim 5.0%.
 ② Continuous Descent Final Approach.

CIRCLE-TO-LAND ②		A	B	C	D
after VOR DME DAY	Rwy 02	4950' (635')	4950' (635')	5780' (1465')	NOT AUTH
		2900m	2900m	3700m	
after VOR DME NIGHT	Rwy 02	NOT AUTH	NOT AUTH	NOT AUTH	NOT AUTH
VOR DME-A DAY	③	5600' (1285')	5600' (1285')	NOT AUTH	NOT AUTH
		3700m	3700m		
VOR DME-A NIGHT	③④	5600' (1285')	5600' (1285')	NOT AUTH	NOT AUTH
		5000m	5000m		
VOR DME-B DAY		5600' (1285')	5600' (1285')	5800' (1485')	NOT AUTH
		3700m	3700m	3700m	
VOR DME-B NIGHT	④	5600' (1285')	5600' (1285')	NOT AUTH	NOT AUTH
		5000m	5000m		

- ② Circling height based on rwy 02 thresh elev of 4315'.
 ③ Missed apch climb grad mim 5.8%.
 ④ Rwy 20: NOT AUTH.

TAKE-OFF RWY 02, 20

JET		TURBO PROP	
2 Eng	800m	1 & 2 Eng	1600m
3 & 4 Eng		3 & 4 Eng	800m

CHANGES: Minimums. Notes.

VNKT/KTM

 4 MAR 11 **JAA MINIMUMS**
KATHMANDU, NEPAL
 TRIBHUVAN INTL

STRAIGHT-IN RWY		A	B	C	D
02	VOR DME ①	4950' (635')	4950' (635')	4950' (635')	4950' (635')
		1600m	1600m	2800m	3200m
	ALS out	2000m	2000m	3200m	3600m

- ① Missed apch climb grad mim 5.0%.

CIRCLE-TO-LAND ②		A	B	C	D
after VOR DME DAY	Rwy 02	4950' (635')	4950' (635')	5780' (1465')	NOT AUTHORIZED
		2000m	2000m	3700m	
after VOR DME NIGHT	Rwy 02	NOT AUTHORIZED	NOT AUTHORIZED	NOT AUTHORIZED	NOT AUTHORIZED
VOR DME-A DAY	③	5600' (1285')	5600' (1285')	NOT AUTHORIZED	NOT AUTHORIZED
		3700m	3700m		
VOR DME-A NIGHT	③④	5600' (1285')	5600' (1285')	NOT AUTHORIZED	NOT AUTHORIZED
		5000m	5000m		
VOR DME-B DAY		5600' (1285')	5600' (1285')	5800' (1485')	NOT AUTHORIZED
		3700m	3700m	3700m	
VOR DME-B NIGHT	④	5600' (1285')	5600' (1285')	NOT AUTHORIZED	NOT AUTHORIZED
		5000m	5000m		

- ② Circling height based on rwy 02 thresh elev of 4315'.
 ③ Missed apch climb grad mim 5.8%.
 ④ Rwy 20: NOT AUTH.

TAKE-OFF RWY 02, 20

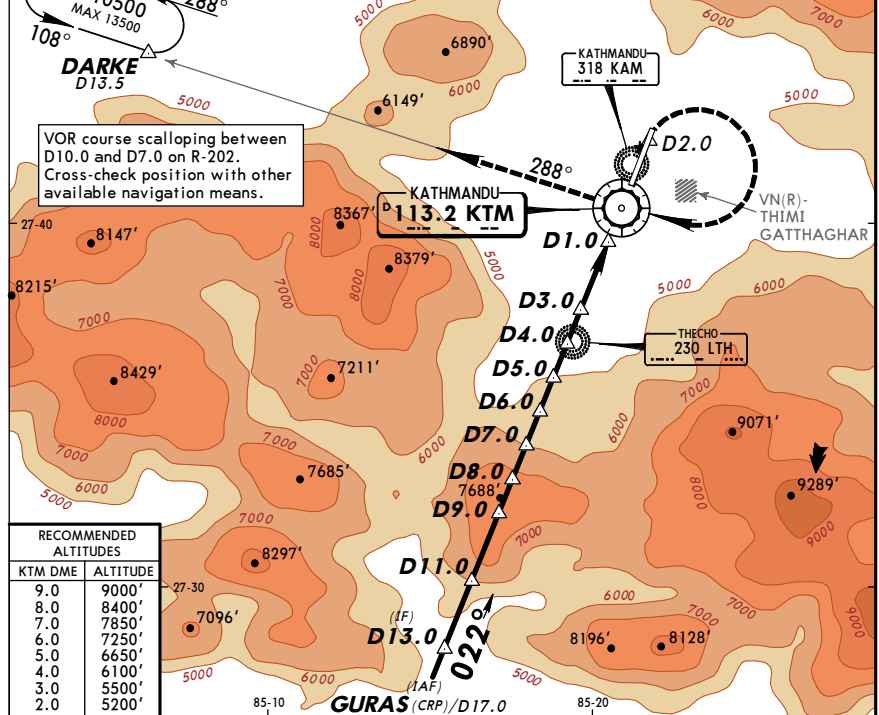
JET		TURBO PROP	
2 Eng	800m	1 & 2 Eng	1600m
3 & 4 Eng		3 & 4 Eng	800m

CHANGES: Minimums. Notes.

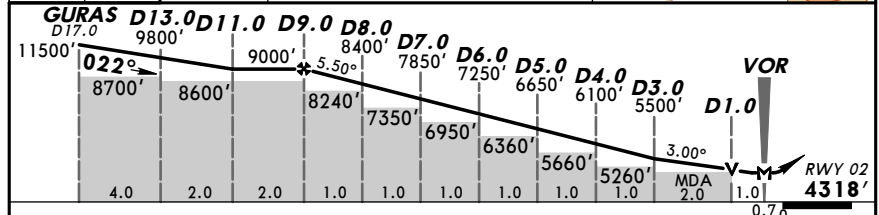
VNKT/KTM KATHMANDU, NEPAL
 TRIBHUVAN INTL 23 MAR 12 (13-1) MISSED APCH CLIMB GRAD MIM 5.0% VOR DME Rwy 02

*ATIS 127.0	*KATHMANDU Approach 120.6 125.1	*KATHMANDU Tower 118.1	*Ground 121.9
VOR KTM 113.2	Final Apt Crs 022°	Procedure Alt D9.0 9000' (4682')	MDA(H) 4950' (632')
Apt Elev 4395'		RWY 4318'	

MISSED APCH: Climb STRAIGHT AHEAD to 5500', then turn RIGHT (MAX 185 KT) to VOR at or above 7500'. Follow R-288 to DARKE at or above 10500'. Do not turn before MAP.



KTM DME	ALTITUDE
9.0	9000'
8.0	8400'
7.0	7850'
6.0	7250'
5.0	6650'
4.0	6100'
3.0	5500'
2.0	5200'



Gnd speed-Kts	70	90	100	120	140	160	HIALS 5500'	MAX 185 KT	KTM 113.2	
Descent Angle D9.0-D3.0	5.50°	683	878	975	1170	1365				PAP
Descent Angle D3.0-THR	3.00°	372	478	531	637	743				

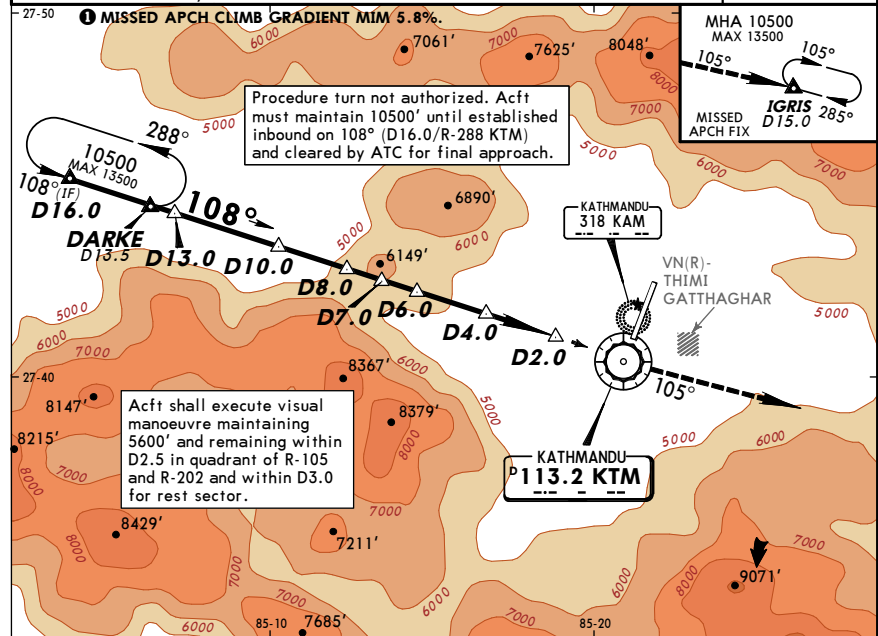
STRAIGHT-IN LANDING RWY 02		CIRCLE-TO-LAND	
Missed apch climb gradient mim 5.0%		DAY	
MDA(H) 4950' (632')		MDA(H)	VIS
A	1600m	A	4950' (632') 2000m
B	2800m	B	5780' (1462') 3700m
C	3200m	C	NOT AUTHORIZED
D	3200m	D	NOT AUTHORIZED

Clircling height based on rwy 02 thresh elev of 4318'.
 CHANGES: Apt & rwy elev. MSA.

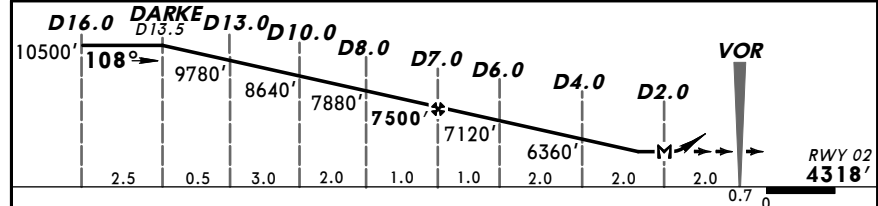
VNKT/KTM KATHMANDU, NEPAL
 TRIBHUVAN INTL 23 MAR 12 (13-2) Eff 5 Apr CAT A & B VOR DME-A

*ATIS 127.0	*KATHMANDU Approach 120.6 125.1	*KATHMANDU Tower 118.1	*Ground 121.9
VOR KTM 113.2	Final Apt Crs 108°	Minimum Alt D7.0 7500' (3182')	MDA(H) 5600' (1282')
Apt Elev 4395'		RWY 02 4318'	

MISSED APCH: Climb STRAIGHT AHEAD to VOR, then proceed outbound on R-105 to reach IGRIS/D15.0 at or above 10500' and join holding pattern.



KTM DME	10.0	9.0	8.0	7.0	6.0	5.0	4.0	3.0	2.0
ALTITUDE	8640'	8260'	7880'	7500'	7120'	6740'	6360'	5980'	5600'



Gnd speed-Kts	70	90	100	120	140	160	Lighting- Refer to Airport chart	Refer to Missed Apch above	
Descent Angle	3.60°	446	573	637	765	892			1019
MAP at D2.0									

CIRCLE-TO-LAND			
DAY		NIGHT	
MDA(H)		Rwy 20: NOT AUTH	
A	5600' (1282')	VIS	5600' (1282') 5000m
B			
C			
D			

Clircling height based on rwy 02 thresh elev of 4318'.
 CHANGES: Apt & rwy elev. MSA.

VNKT/KTM
TRIBHUVAN INTL

23 MAR 12

13-3

Eff 5 Apr

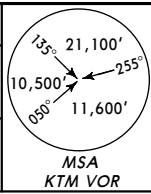
CAT A, B & C

KATHMANDU, NEPAL
VOR DME-B

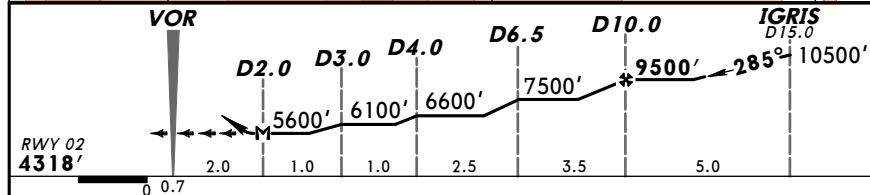
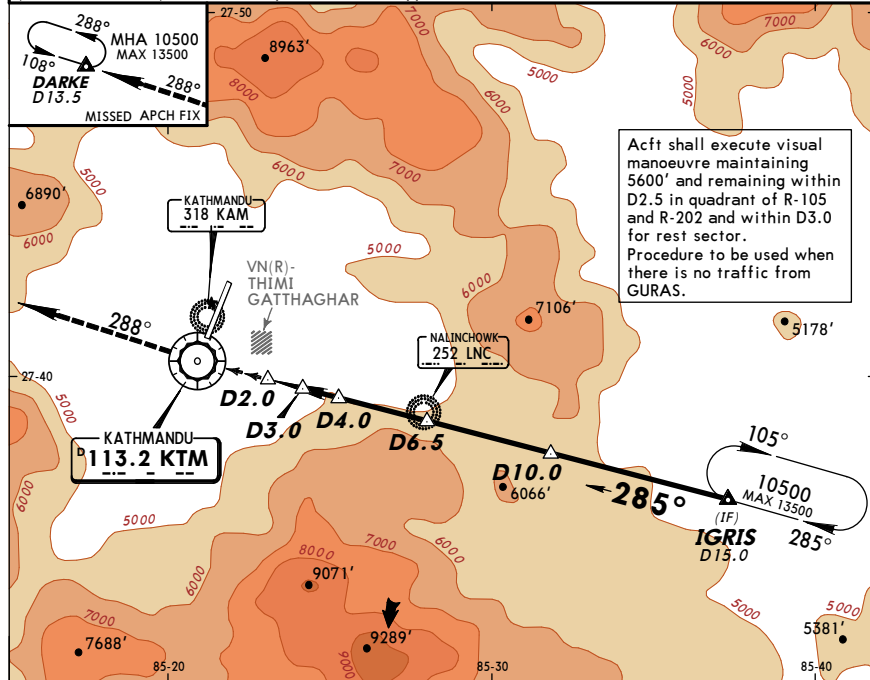
BRIEFING STRIP

*ATIS 127.0	*KATHMANDU Approach 120.6 125.1	*KATHMANDU Tower 118.1	*Ground 121.9
VOR KTM 113.2	Final Apch Crs 285°	Minimum Alt D10.0 9500' (5182')	MDA(H) Refer to Minimums Apt Elev 4395' RWY 02 4318'

MISSED APCH: Climb STRAIGHT AHEAD to VOR, then proceed outbound on R-288 to cross DARKE at or above 10500' and join holding pattern.



Alt Set: hPa Apt Elev: 151 hPa Trans level: FL 150 Trans alt: 13500'
Procedure turn not authorized. Acft must maintain 9500' until established inbound on 285° (D10.0/R-105 KTM) and cleared by ATC for final approach.



MAP at D2.0								Lighting Refer to Airport chart	Refer to Missed Apch above
-------------	--	--	--	--	--	--	--	--	----------------------------------

	DAY		NIGHT	
	MDA(H)	VIS	MDA(H)	VIS
A	5600' (1282')	3700m	5600' (1282')	5000m
B	5800' (1482')	3700m	NOT AUTHORIZED	
C	NOT AUTHORIZED			
D	NOT AUTHORIZED			

■ Circling height based on rwy 02 thresh elev of 4318'.

CHANGES: Apt & rwy elev. MSA.