

MGGT/GUA
LA AURORA INTL

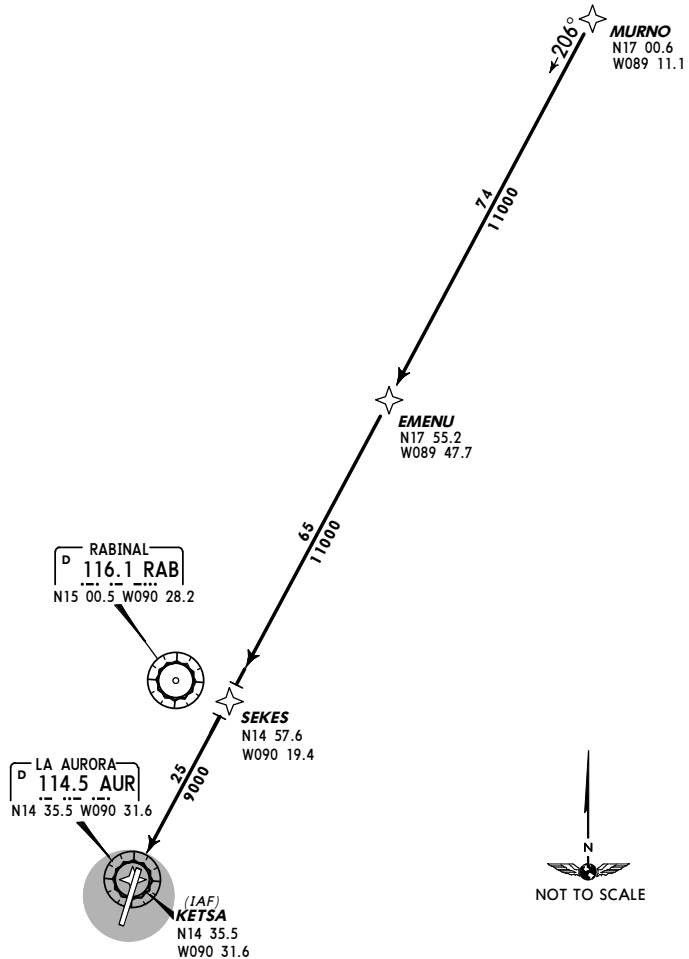
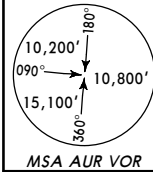
GUATEMALA CITY, GUATEMALA

10-2A 17 FEB 12

RNAV STAR

ATIS 127.65	Apt Elev 4952'	Alt Set: IN (hPa on req) Trans level: FL 200 Trans alt: 19000'
<p>1. The approaches start at IAF KETSA/transition for the approaches ILS or VOR/DME RWY 01 with ATC clearance.</p> <p>2. The clearance from ATC requires that the pilot continues the RNAV STAR, at the MEA until ATC clearance for descent is received, for 9000' from SEKES at 25 NM from IAF KETSA (same as AUR).</p>		

STAR RNAV C RWY 01
[ARRØ1C]



CHANGES: Transition altitude.

MGGT/GUA
LA AURORA INTL

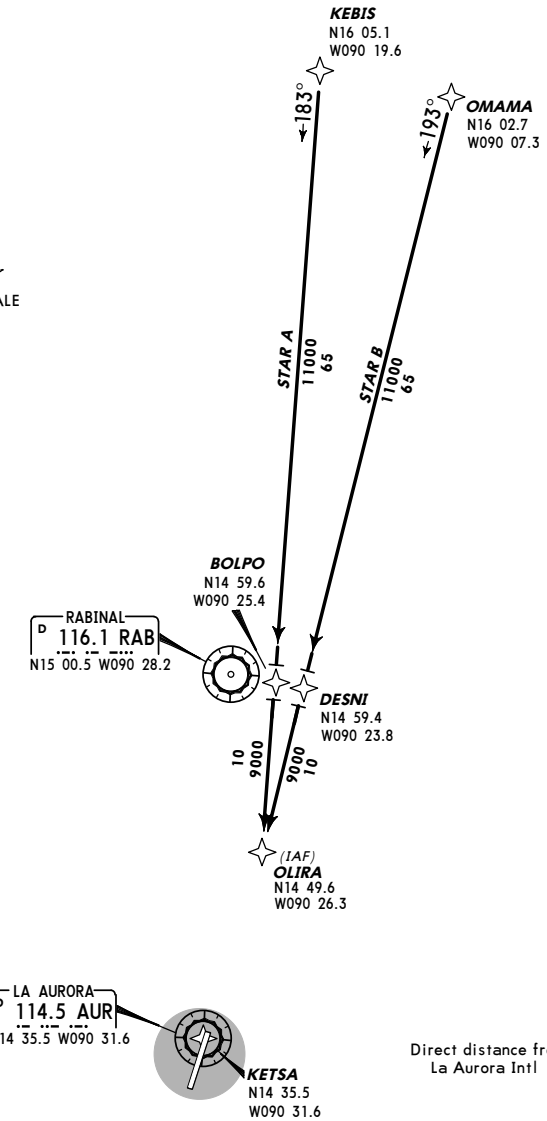
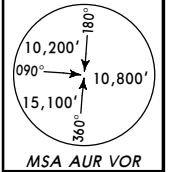
GUATEMALA CITY, GUATEMALA

10-2B 17 FEB 12

RNAV STAR

ATIS 127.65	Apt Elev 4952'	Alt Set: IN (hPa on req) Trans level: FL 200 Trans alt: 19000'
<p>1. The final approach starts at IAF OLIRA/transition VOR/DME RWY 19 with ATC clearance.</p> <p>2. The clearance from ATC requires that the pilot continues the RNAV STAR, at the MEA until ATC clearance for descent is received, for 9000' from waypoints (BOLPO-DESNI) at 10 NM from IAF OLIRA (same KATAS).</p>		

STAR RNAV A RWY 19 [ARR19A]
STAR RNAV B RWY 19 [ARR19B]



Direct distance from OLIRA to:
La Aurora Intl 16 NM

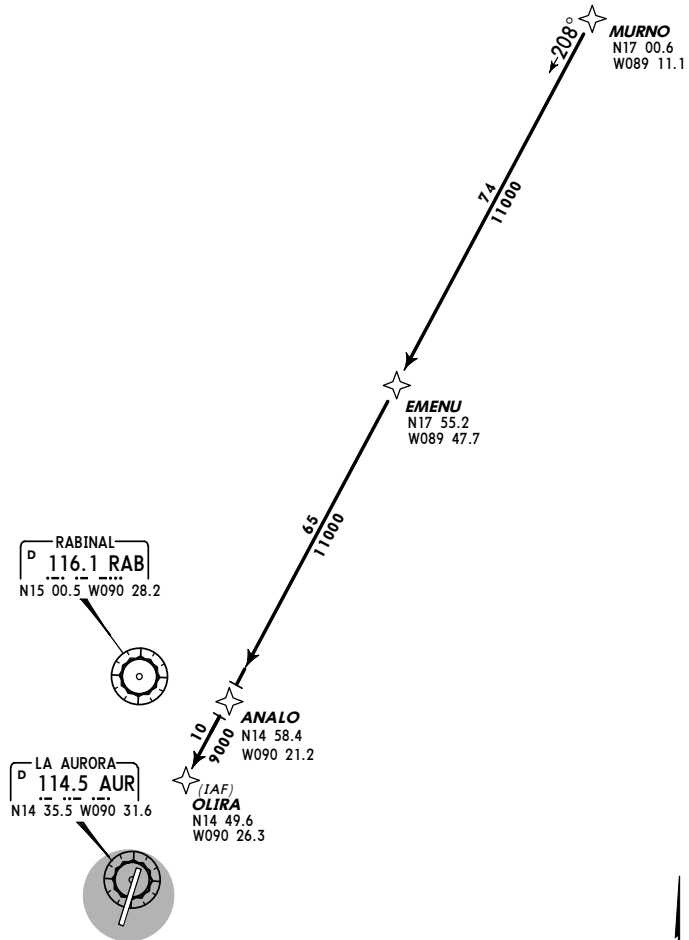
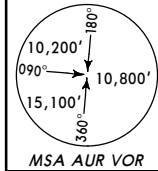
CHANGES: Transition altitude.

ATIS 127.65
Apt Elev 4952'

Alt Set: IN (hPa on req)
Trans level: FL 200 Trans alt: 19000'

- The approach starts at IAF OLIRA/transition for the approach VOR/DME RWY 19 with ATC clearance.
- The clearance from ATC requires that the pilot continues the RNAV STAR, at the MEA until ATC clearance for descent is received, for 9000' from ANALO at 10 NM from IAF OLIRA.

STAR RNAV C RWY 19
[ARR19C]

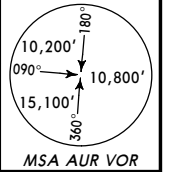


Direct distance from OLIRA to:
La Aurora Intl 16 NM

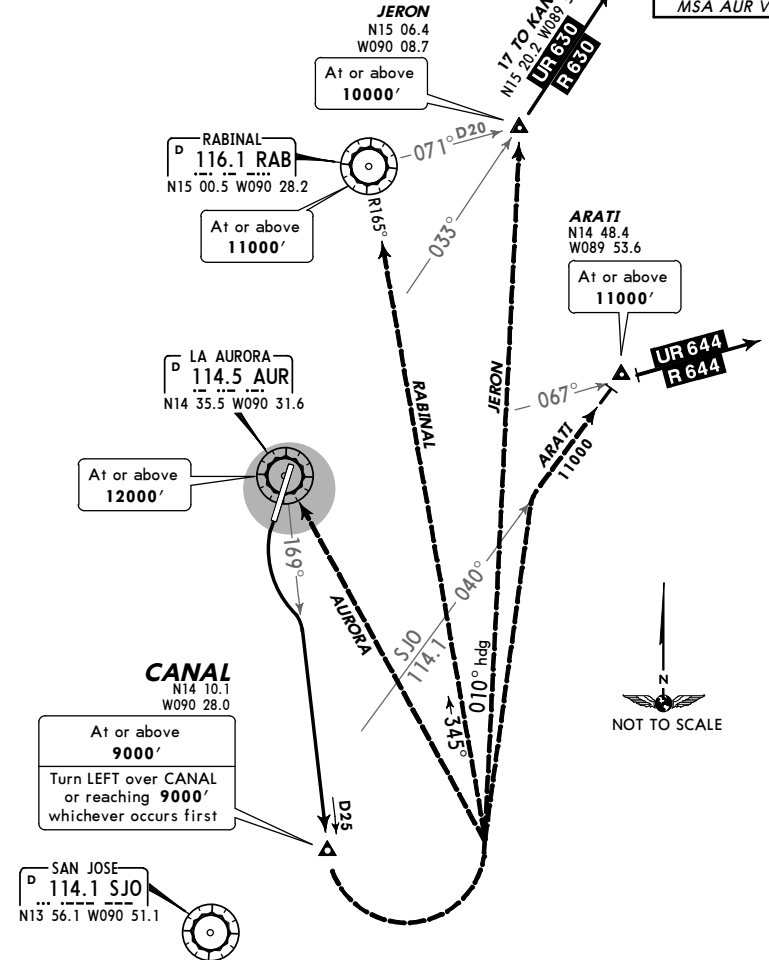


CHANGES: Transition altitude.

Apt Elev 4952' Trans level: FL 200 Trans alt: 19000'



CANAL DEPARTURE
[CANAL]
(RWY 19)



INITIAL CLIMB

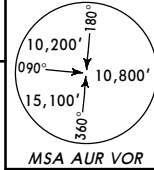
Turn LEFT climbing on AUR R-169 to CANAL.

TRANSITIONS

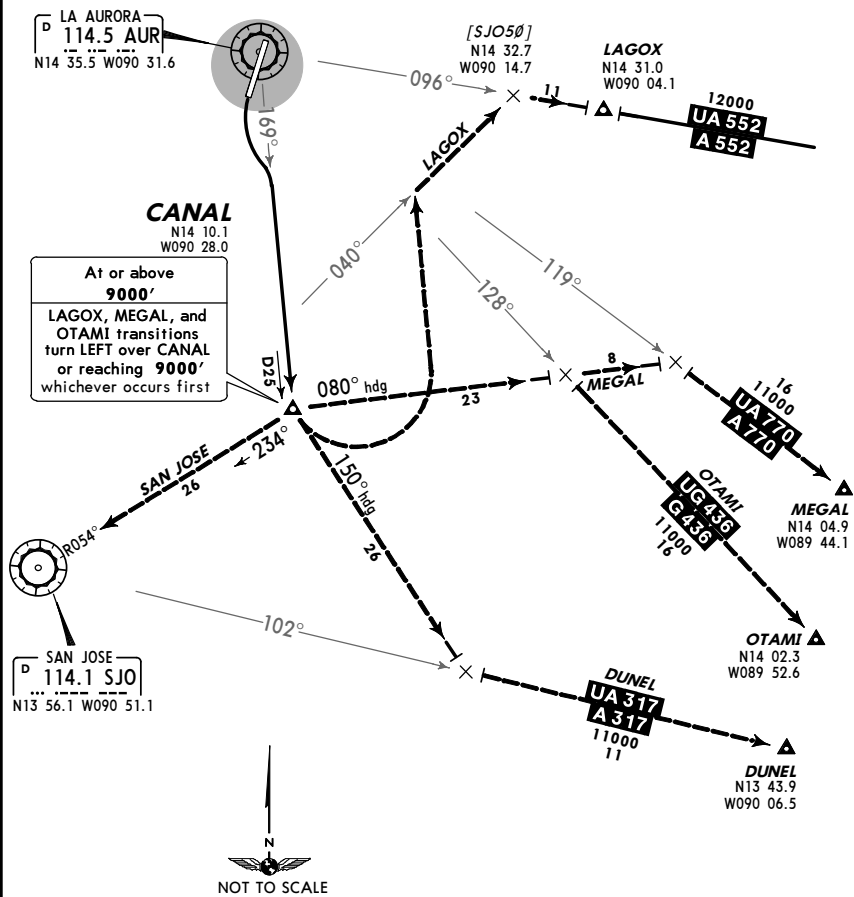
ARATI	From over CANAL or reaching 9000' whichever occurs first, turn LEFT to intercept SJO R-040 to intercept R-644/UR-644. Continue climbing to 11000' or above, according to ATC instructions.
AURORA	From over CANAL or reaching 9000' whichever occurs first, turn LEFT direct to AUR.
JERON	From over CANAL or reaching 9000' whichever occurs first, turn LEFT heading 010° to intercept R-630/UR-630. Continue climbing to 11000' or above, according to ATC instructions.
RABINAL	From over CANAL or reaching 9000' whichever occurs first, turn LEFT intercept and proceed inbound via RAB R-165 to RAB. Continue climbing to 11000' or above, according to ATC instructions.

CHANGES: Transition altitude, new format.

Apt Elev 4952' Trans level: FL 200 Trans alt: 19000'



CANAL 2 DEPARTURE
[CANAL2]
(RWY 19)



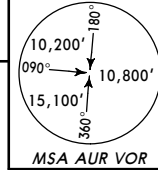
INITIAL CLIMB

Turn LEFT climbing on AUR R-169 to CANAL.

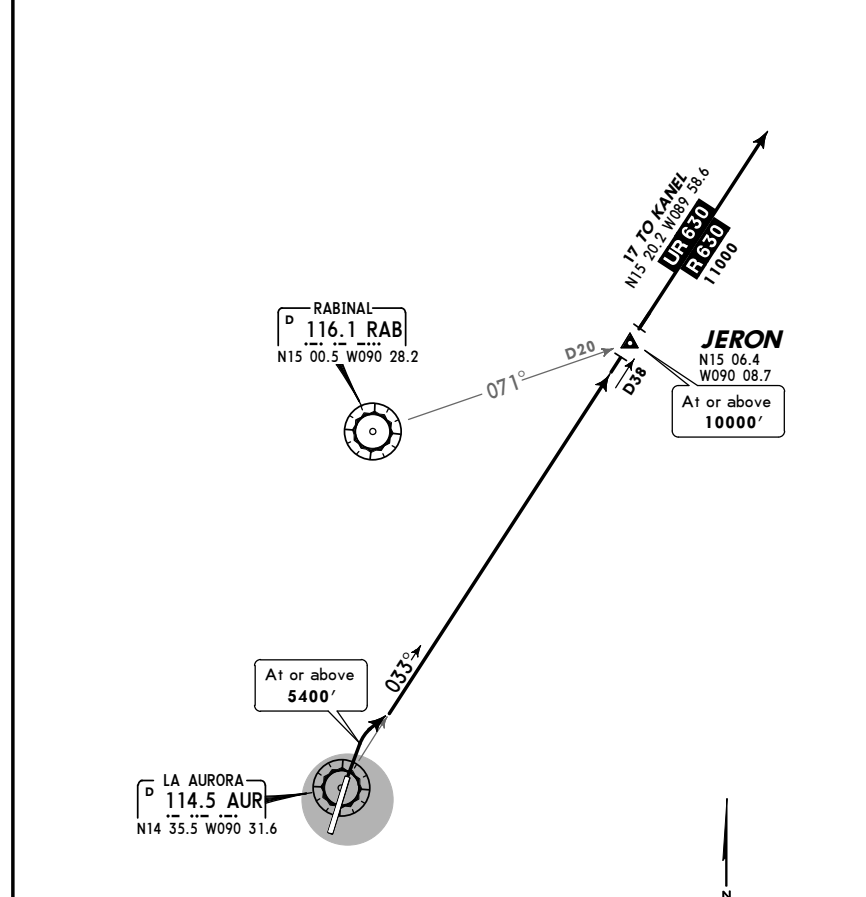
TRANSITIONS		ALTITUDE
DUNEL	From over CANAL, turn LEFT to a 150° heading to intercept A-317/UA-317.	Continue climbing to 11000' or above, according to ATC instructions.
LAGOX	From over CANAL or reaching 9000' whichever occurs first, turn LEFT to intercept and proceed via SJO R-040 to intercept A-552/UA-552.	
MEGAL	From over CANAL or reaching 9000' whichever occurs first, turn LEFT to a 080° heading to intercept A-770/UA-770.	
OTAMI	From over CANAL or reaching 9000' whichever occurs first, turn LEFT to a 080° heading to intercept G-436/UG-436.	
SAN JOSE	From over CANAL, turn RIGHT to intercept SJO R-054 to SJO. Continue according to ATC instructions.	

CHANGES: Transition altitude, new format.

Apt Elev 4952' Trans level: FL 200 Trans alt: 19000'



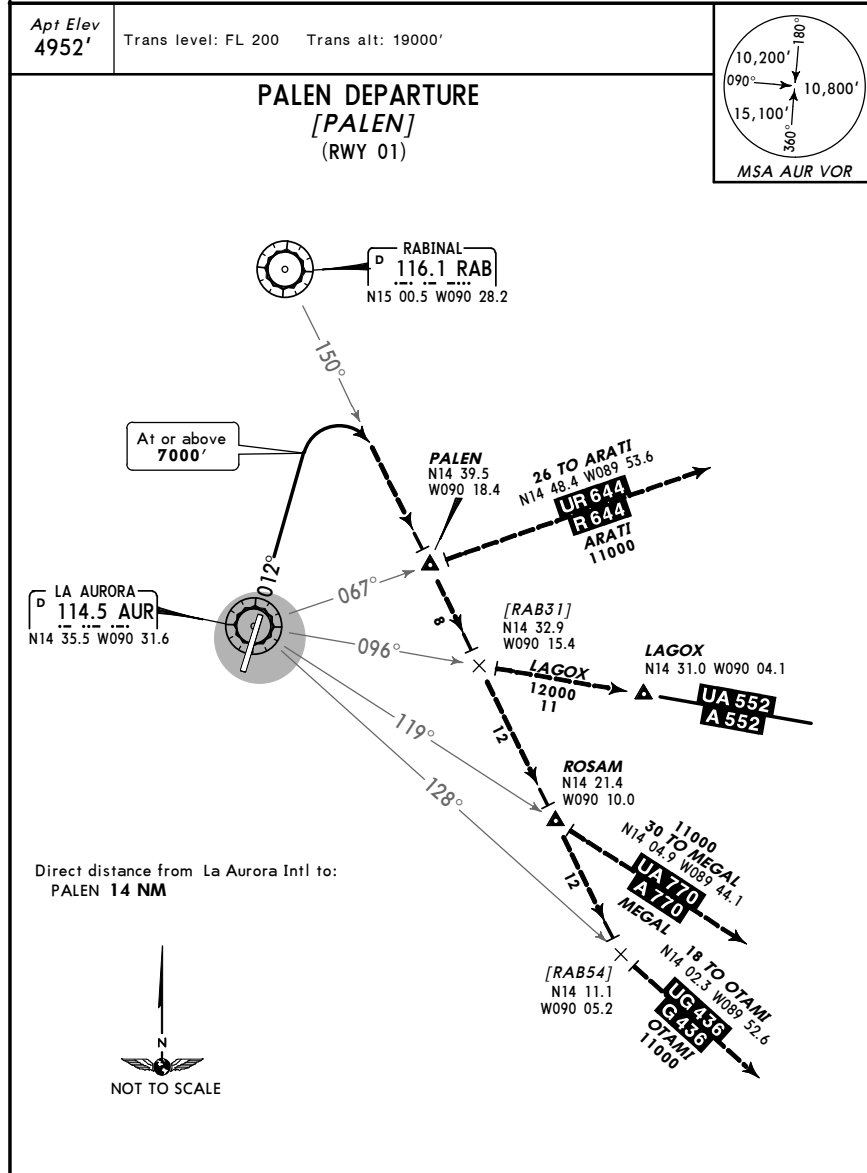
JERON DEPARTURE
[JERON]
(RWY 01)



INITIAL CLIMB

Climb until reaching 5400', turn RIGHT to intercept AUR R-033 to JERON. Continue climbing to 11000' or above, according to ATC instructions.

CHANGES: Transition altitude, new format.



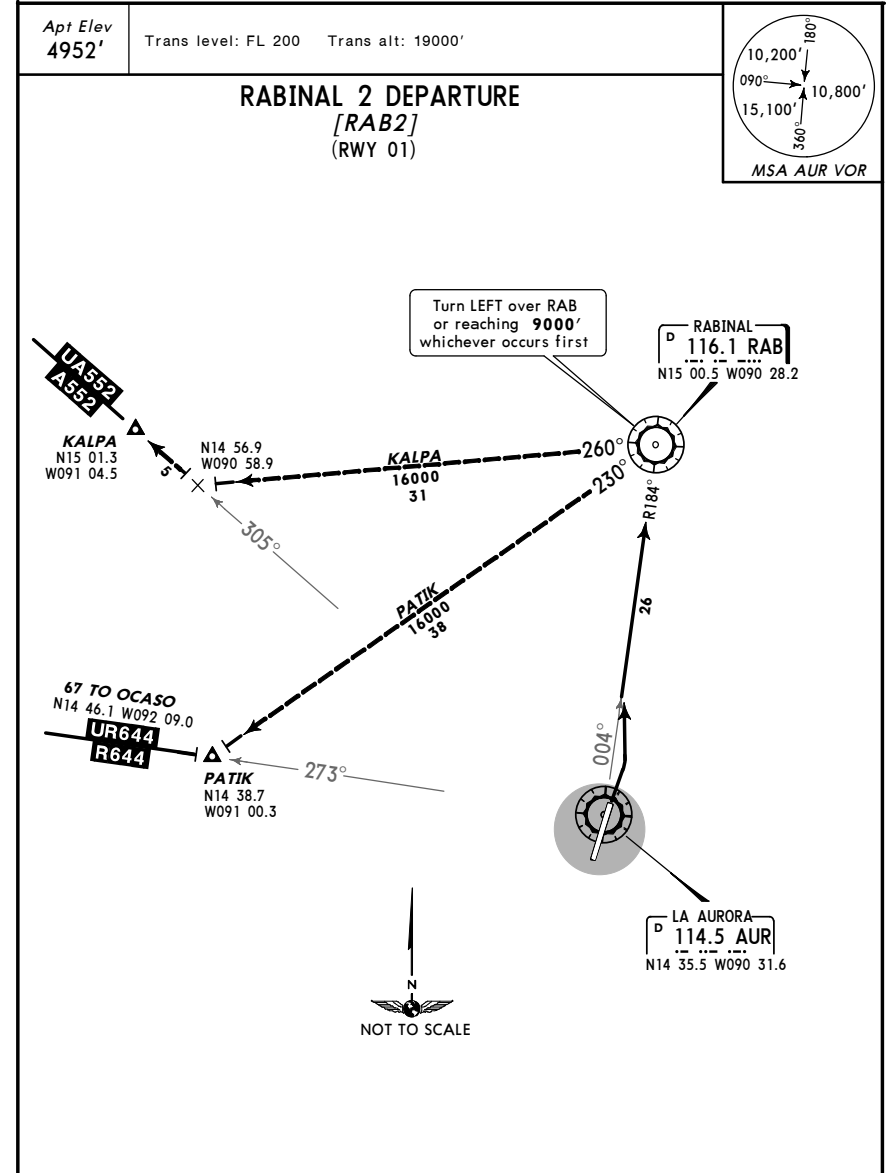
INITIAL CLIMB

Climb on AUR R-012 until reaching 7000' or above turn RIGHT to intercept RAB R-150.

TRANSITIONS

ARATI	Continue climbing on RAB R-150 to intercept R-644/UR-644 at or above according to ATC instructions.	11000'
LAGOX	Continue climbing on RAB R-150 to intercept A-552/UA-552 at or above according to ATC instructions.	12000'
MEGAL	Continue climbing on RAB R-150 to intercept A-770/UA-770 at or above according to ATC instructions.	11000'
OTAMI	Continue climbing on RAB R-150 to intercept G-436/UG-436 at or above according to ATC instructions.	11000'

CHANGES: Transition altitude, coordinates, new format.



INITIAL CLIMB

Turn LEFT climbing on AUR R-004.

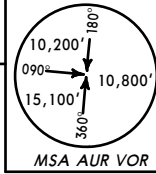
TRANSITIONS

ALTITUDE

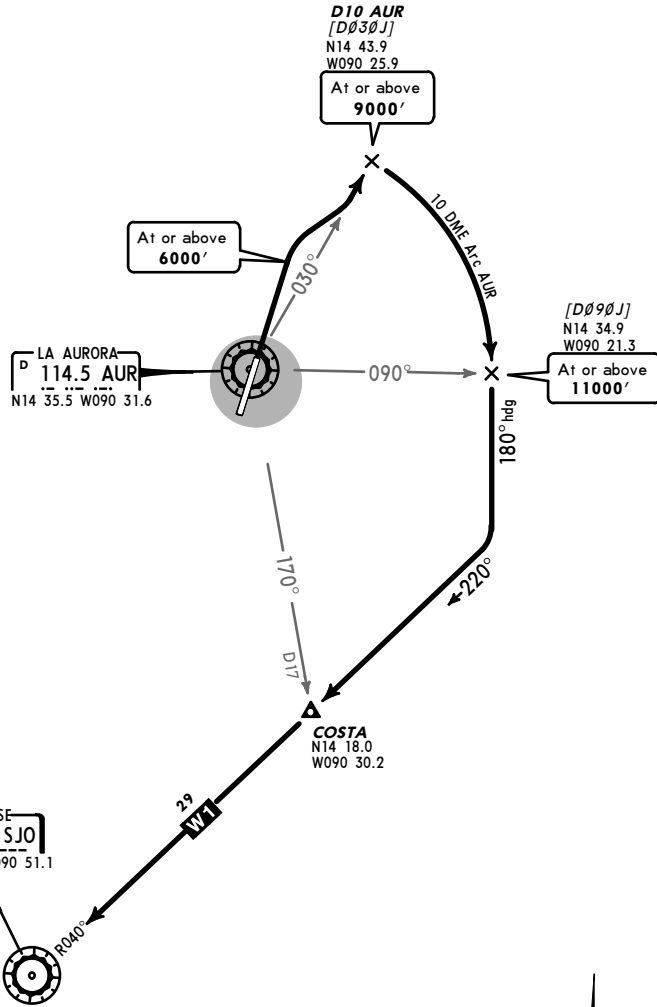
KALPA	From over RAB or reaching 9000', whichever occurs first, turn LEFT to intercept RAB R-260, continue until intercepting A-552/UA-552.	Continue climb to 16000' or above, according to ATC instructions.
PATIK	From over RAB or reaching 9000', whichever occurs first, turn LEFT to intercept RAB R-230, continue until intercepting R-644/UR-644.	

CHANGES: Transition altitude.

Apt Elev
4952' Trans level: FL 200 Trans alt: 19000'



SAN JOSE ALFA DEPARTURE
[SJOA]
(RWY 01)



This SID requires a minimum climb gradient of 400' per NM.

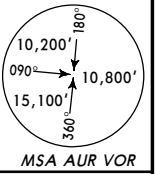
Gnd speed-KT	75	100	150	200	250	300
400' per NM	500	666	1000	1333	1666	2000

INITIAL CLIMB

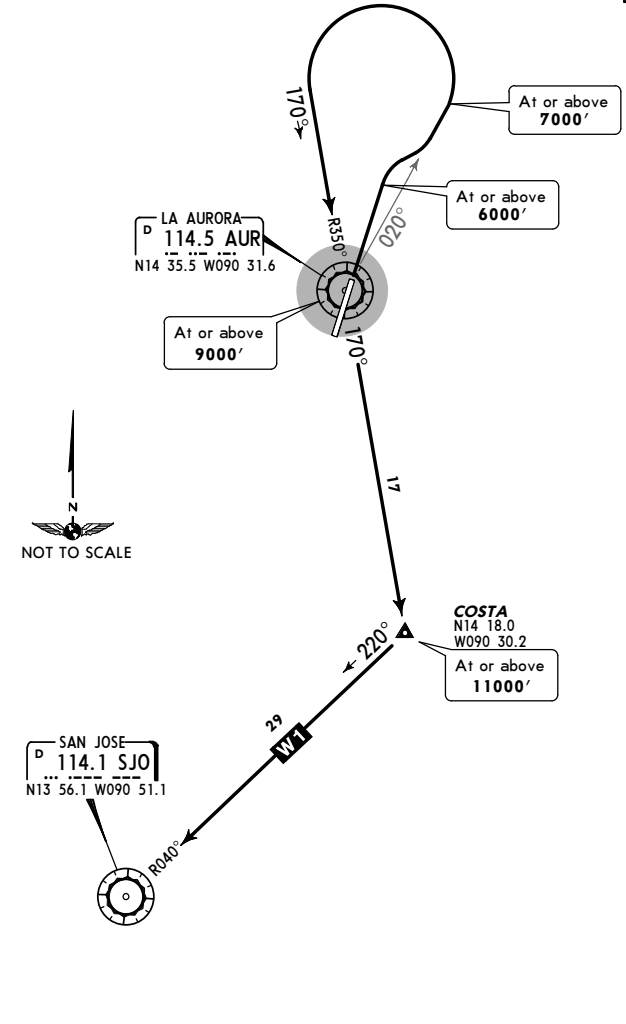
Climb runway heading until 6000', then RIGHT climbing turn to intercept AUR R-030, continue climbing to 9000' to D10 AUR. Fly the AUR 10 DME Arc until crossing AUR R-090, then heading 180° to intercept SJO R-040, then according to ATC instructions.

CHANGES: Transition altitude, coordinates.

Apt Elev
4952' Trans level: FL 200 Trans alt: 19000'



SAN JOSE BRAVO DEPARTURE
[SJOB]
(RWY 01)



This SID requires a minimum climb gradient of 300' per NM.

Gnd speed-KT	75	100	150	200	250	300
300' per NM	375	500	750	1000	1250	1500

INITIAL CLIMB

Climb runway heading until 6000', then RIGHT climbing turn to intercept AUR R-020, continue climbing to 7000', then LEFT climbing turn to intercept AUR R-350, and continue climb to AUR. Continue on AUR R-170 to COSTA, then according to ATC instructions.

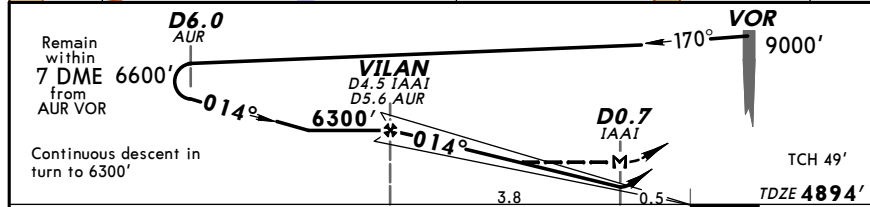
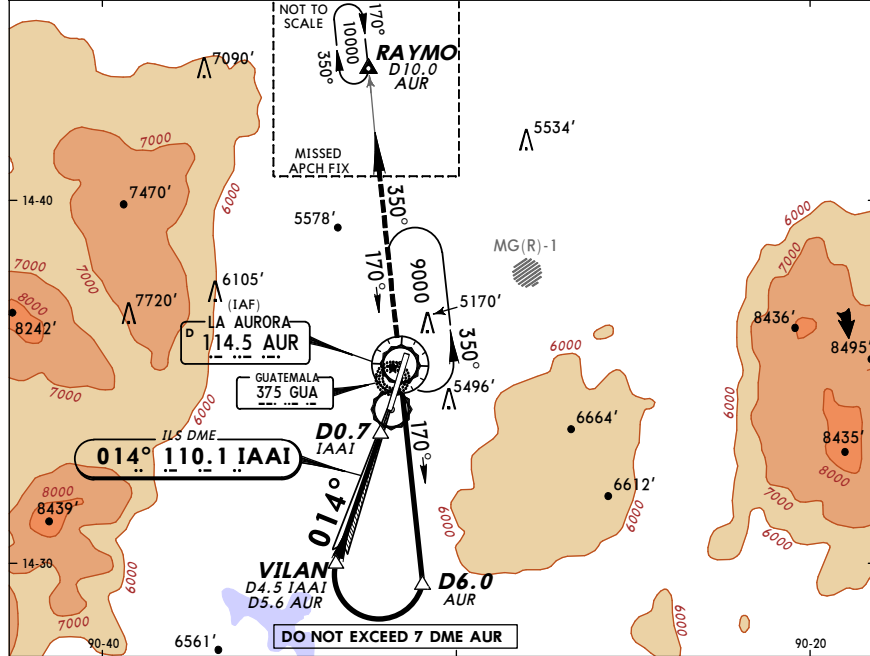
CHANGES: Transition altitude.

MGGT/GUA
LA AURORA INTL

17 FEB 12 (11-1)

N GUATEMALA CITY, GUATEMALA
ILS DME-1 Rwy 01

ATIS 127.65		LA AURORA Approach (*R) 119.3		LA AURORA Tower 118.1		Ground 121.9	
LOC IAAI 110.1	Final Apch Crs 014°	Minimum Alt VILAN 6300' (1406')	ILS DA(H) 5100' (206')	Apt Elev 4952' TDZE 4894'			
<p>MISSED APCH: Climb on course of 014° until reaching AUR VOR, then LEFT turn outbound on AUR VOR R-350 and continue climbing until reaching 10000' at RAYMO D10.0 AUR and hold. Request instructions from APP.</p>							
Alt Set: INCHES		Trans level: FL 200		Trans alt: 19000'		MSA AUR VOR	



Gnd speed-Kts	70	90	100	120	140	160	SALS	014°	AUR	AUR	10000'
Gs	3.00°	372	478	531	637	743	849	REIL	114.5	LT	114.5
MAP at D0.7 IAAI								PAPI	R-350		

STRAIGHT-IN LANDING RWY 01				CEILING REQUIRED		CIRCLE-TO-LAND	
ILS DA(H) 5100' (206')		LOC (GS out) MDA(H) 5340' (446')		TERPS Not Authorized East of Rwy			
FULL		ALS out		Max Kts		MDA(H) CEIL-VIS	
250'-3/4		500'-1		90		5460'(508') 600'-1	
				120			
				140		5460'(508') 600'-1 1/2	
				165		5680'(728') 800'-2 1/4	

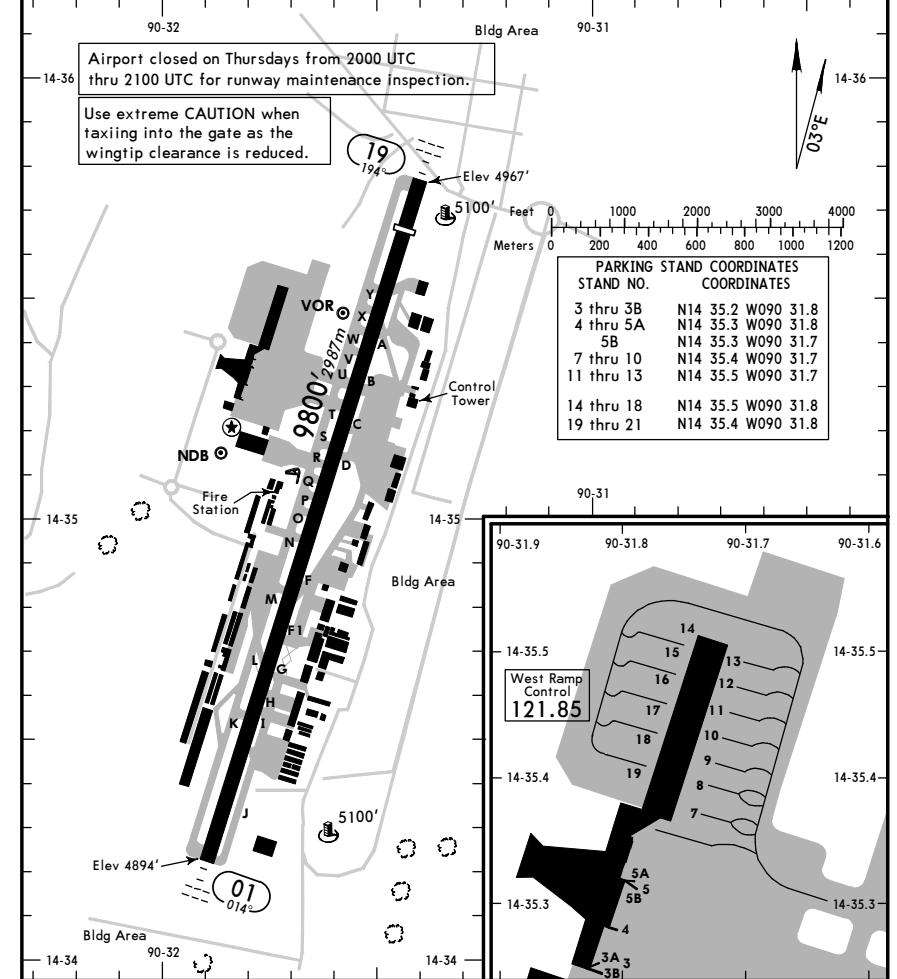
CHANGES: Transition altitude, ATIS frequency, TDZE, minimums.

MGGT/GUA
Apt Elev 4952'
N14 34.9 W090 31.6

17 FEB 12 (11-1)

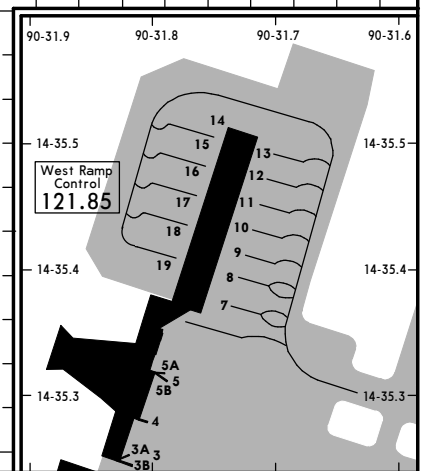
GUATEMALA CITY, GUATEMALA
LA AURORA INTL

ATIS 127.65	LA AURORA Clearance 120.7	Ground 121.9	Tower 118.1
----------------	------------------------------	-----------------	----------------



PARKING STAND COORDINATES

STAND NO.	COORDINATES
3 thru 3B	N14 35.2 W090 31.8
4 thru 5A	N14 35.3 W090 31.8
5B	N14 35.3 W090 31.7
7 thru 10	N14 35.4 W090 31.7
11 thru 13	N14 35.5 W090 31.7
14 thru 18	N14 35.5 W090 31.8
19 thru 21	N14 35.4 W090 31.8



RWY	USABLE LENGTHS			TAKE-OFF	WIDTH
	Threshold	LANDING BEYOND	Glide Slope		
01	HIRL SALS REIL PAPI (angle 3.0°)	8800'	2682m		197'
19	HIRL SALS REIL PAPI (angle 3.5°)	9080'	2768m		60m

TAKE-OFF			
AIR CARRIER (JAA) All Rwys		AIR CARRIER (FAR 121) All Rwys	
RCLM (Day only) or RL		Adequate Vis Ref	
A	1/4	2 Eng	1/4
B		3 & 4 Eng	
C			
D			

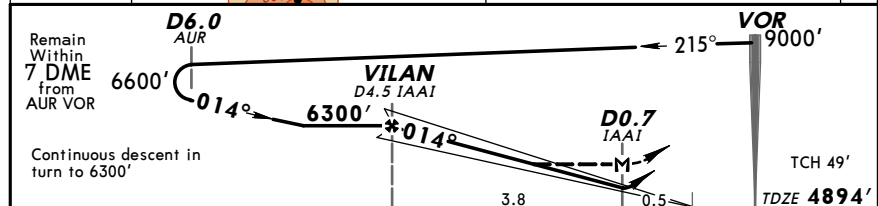
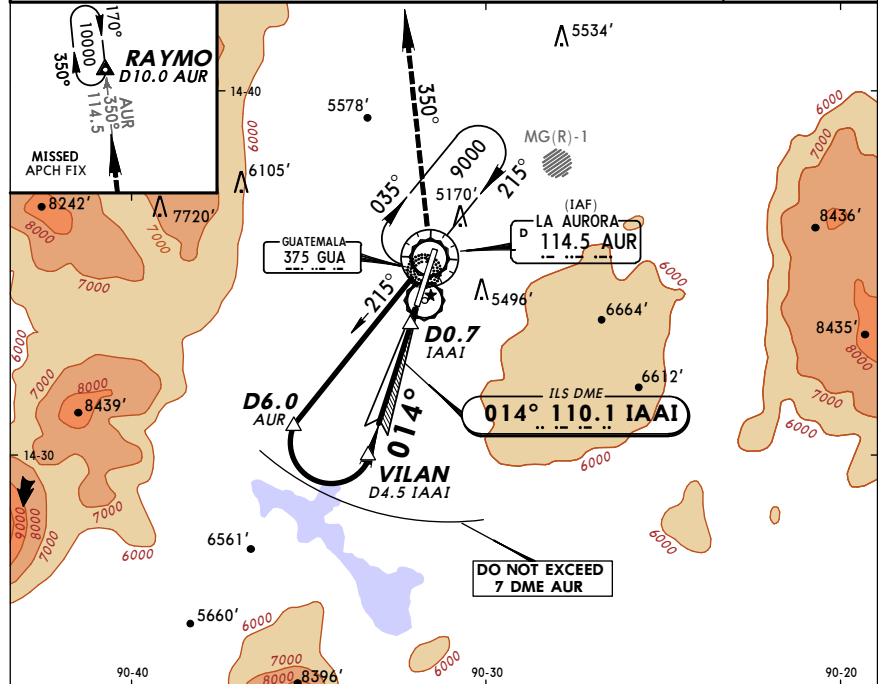
CHANGES: ATIS frequency, parking stands.

MGGT/GUA
LA AURORA INTL 17 FEB 12 (11-2) **GUATEMALA CITY, GUATEMALA**
ILS DME-2 Rwy 01

ATIS 127.65		LA AURORA Approach (*R) 119.3		LA AURORA Tower 118.1		Ground 121.9	
LOC IAAI 110.1	Final Apch Crs 014°	Minimum Alt VILAN 6300' (1406')	ILS DA(H) 5100' (206')	Apt Elev 4952'		TDZE 4894'	

MISSED APCH: Climb on course of 014° until reaching AUR VOR, then LEFT turn outbound on AUR VOR R-350 and continue climbing until reaching 10000' at RAYMO D10.0 AUR and hold.
Request instructions from APP.

Alt Set: INCHES Trans level: FL 200 Trans alt: 19000' MSA AUR VOR



Gnd speed-Kts	70	90	100	120	140	160	SALS	014°	AUR	AUR	10000'
GS	3.00°	372	478	531	637	743	849	REIL PAPI	114.5	LT	R-350
MAP at D0.7 IAAI											

STRAIGHT-IN LANDING RWY 01		CEILING REQUIRED		CIRCLE-TO-LAND	
ILS DA(H) 5100' (206')		LOC (GS out) MDA(H) 5340' (446')		Not Authorized East of Rwy	
FULL	ALS out	CEILING-VISIBILITY	ALS out	Max Kts	MDA(H) CEIL-VIS
A				90	5460' (508') 600'-1
B				120	5460' (508') 600'-1 1/2
C	250'-3/4			140	5460' (508') 600'-1 1/2
D				165	5680' (728') 800'-2 1/4

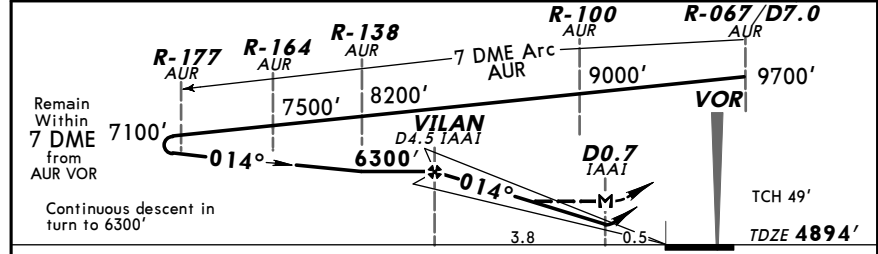
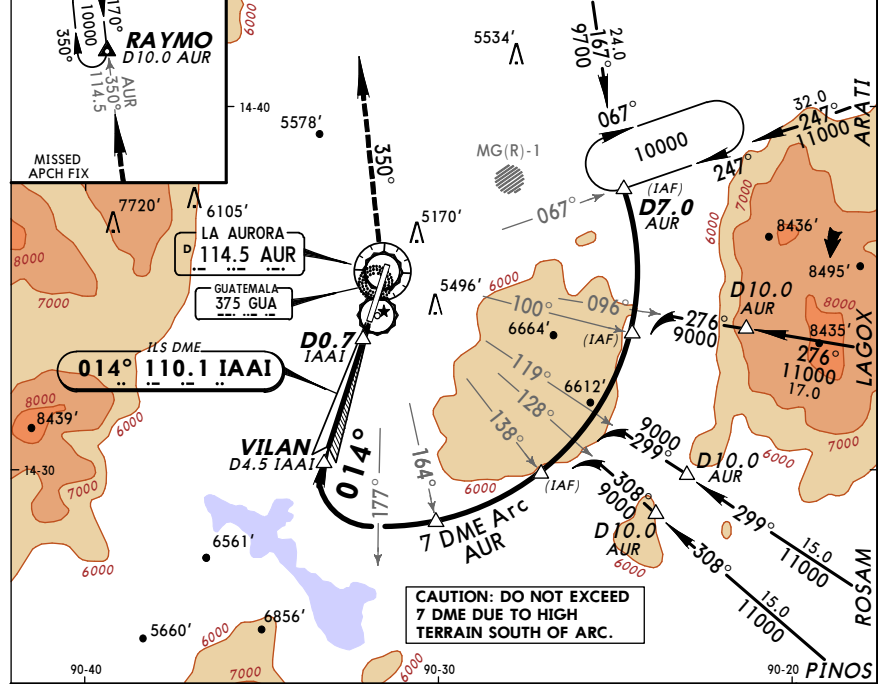
CHANGES: Transition altitude, ATIS frequency, TDZE.

MGGT/GUA
LA AURORA INTL 17 FEB 12 (11-3) **GUATEMALA CITY, GUATEMALA**
ILS DME Arc Rwy 01

ATIS 127.65		LA AURORA Approach (*R) 119.3		LA AURORA Tower 118.1		Ground 121.9	
LOC IAAI 110.1	Final Apch Crs 014°	Minimum Alt VILAN 6300' (1406')	ILS DA(H) 5100' (206')	Apt Elev 4952'		TDZE 4894'	

MISSED APCH: Climb on course of 014° until reaching AUR VOR, then LEFT turn outbound on AUR VOR R-350 and continue climbing until reaching 10000' at RAYMO D10.0 AUR and hold. Request instructions from APP.

Alt Set: INCHES Trans level: FL 200 Trans alt: 19000' MSA AUR VOR



Gnd speed-Kts	70	90	100	120	140	160	SALS	014°	AUR	AUR	10000'
GS	3.00°	372	478	531	637	743	849	REIL PAPI	114.5	LT	R-350
MAP at D0.7 IAAI											

STRAIGHT-IN LANDING RWY 01		CEILING REQUIRED		CIRCLE-TO-LAND	
ILS DA(H) 5100' (206')		LOC (GS out) MDA(H) 5340' (446')		Not Authorized East of Rwy	
FULL	ALS out	CEILING-VISIBILITY	ALS out	Max Kts	MDA(H) CEIL-VIS
A				90	5460' (508') 600'-1
B				120	5460' (508') 600'-1 1/2
C	250'-3/4			140	5460' (508') 600'-1 1/2
D				165	5680' (728') 800'-2 1/4

CHANGES: Transition altitude, ATIS frequency, TDZE.

MGGT/GUA
LA AURORA INTL

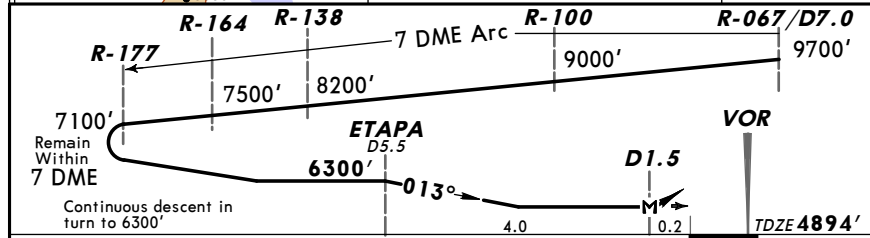
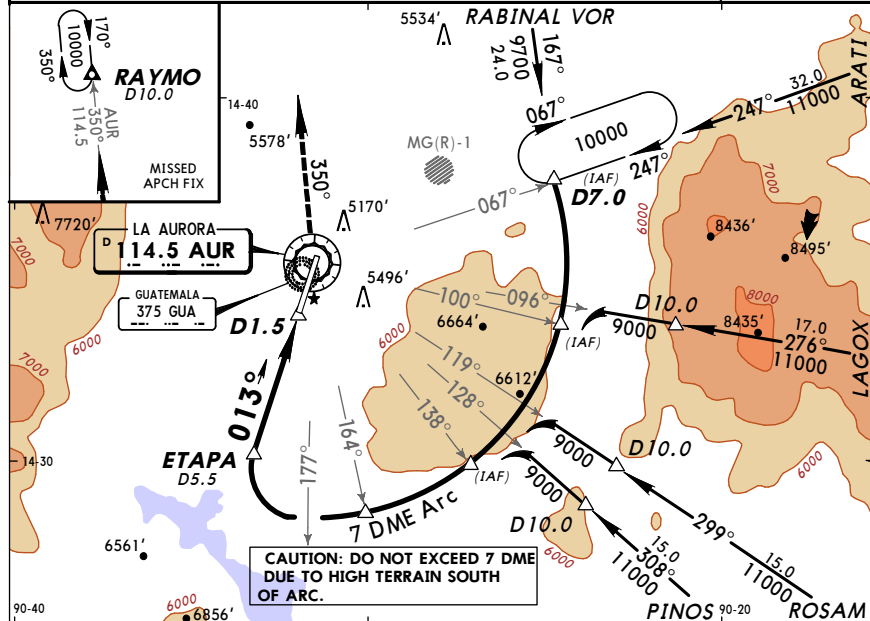
17 FEB 12 (13-1)

GUATEMALA CITY, GUATEMALA
VOR DME Arc Rwy 01

ATIS 127.65		LA AURORA Approach (*R) 119.3		LA AURORA Tower 118.1		Ground 121.9	
VOR AUR 114.5	Final Apch Crs 013°	Minimum Alt ETAPA 6300' (1406')	MDA(H) 5340' (446')	Apt Elev 4952' TDZE 4894'			

MISSED APCH: Climb on course of 013° until reaching AUR VOR, then LEFT turn outbound on AUR VOR R-350 and continue climbing until reaching 10000' at RAYMO D10.0 and hold. Request instructions from APP.

Alt Set: INCHES Trans level: FL 200 Trans alt: 19000' MSA AUR VOR



SALS REIL PAPI	013°	AUR	114.5	LT	AUR	114.5	R-350	10000'
MAP at D1.5								

STRAIGHT-IN LANDING RWY 01		CEILING REQUIRED		CIRCLE-TO-LAND	
MDA(H) 5340' (446')		Not Authorized East of Rwy		MDA(H)	
CEILING-VISIBILITY	ALS out	Max Kts	MDA(H)	CEIL-VIS	
A		90			
B	500'-1	120	5460' (508')	600'-1	
C		140	5460' (508')	600'-1½	
D	500'-1½	165	5680' (728')	800'-2¼	

CHANGES: Transition altitude, ATIS frequency, TDZE.

MGGT/GUA
LA AURORA INTL

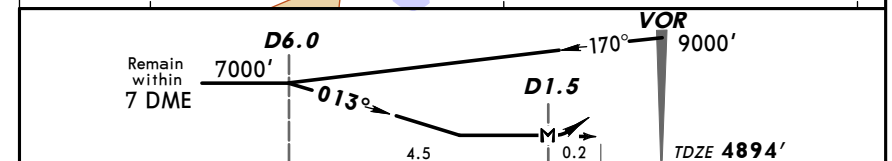
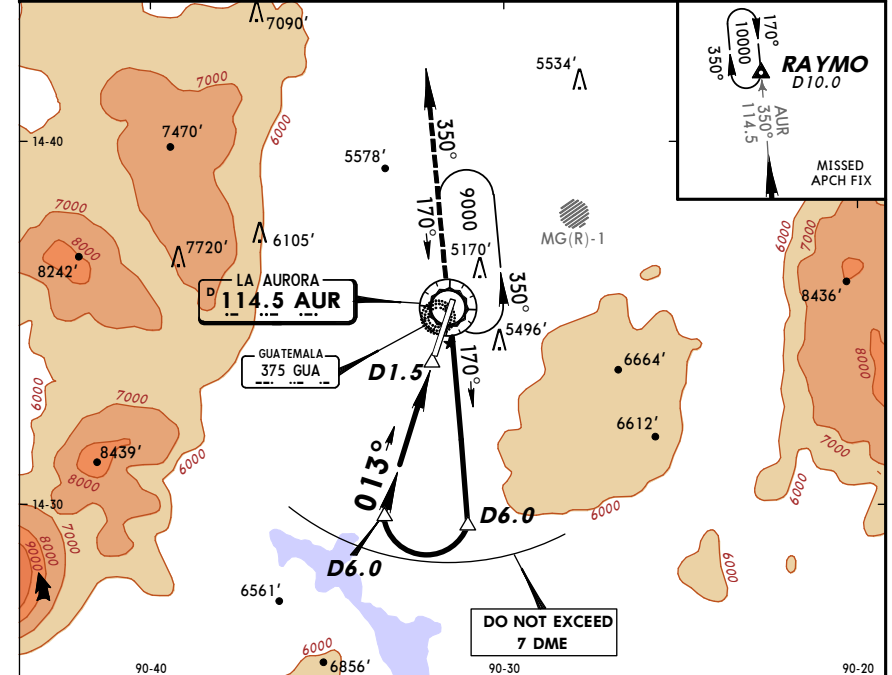
17 FEB 12 (13-2)

GUATEMALA CITY, GUATEMALA
VOR DME-1 Rwy 01

ATIS 127.65		LA AURORA Approach (*R) 119.3		LA AURORA Tower 118.1		Ground 121.9	
VOR AUR 114.5	Final Apch Crs 013°	No FAF	MDA(H) 5340' (446')	Apt Elev 4952' TDZE 4894'			

MISSED APCH: Climb on course of 013° until reaching AUR VOR, then LEFT turn outbound on AUR VOR R-350 and continue climbing until reaching 10000' at RAYMO D10.0 and hold. Request instructions from APP.

Alt Set: INCHES Trans level: FL 200 Trans alt: 19000' MSA AUR VOR



SALS REIL PAPI	013°	AUR	114.5	LT	AUR	114.5	R-350	10000'
MAP at D1.5								

STRAIGHT-IN LANDING RWY 01		CEILING REQUIRED		CIRCLE-TO-LAND	
MDA(H) 5340' (446')		Not Authorized East of Rwy		MDA(H)	
CEILING-VISIBILITY	ALS out	Max Kts	MDA(H)	CEIL-VIS	
A		90			
B	500'-1	120	5460' (508')	600'-1	
C		140	5460' (508')	600'-1½	
D	500'-1½	165	5680' (728')	800'-2¼	

CHANGES: Transition altitude, ATIS frequency, TDZE.

MGGT/GUA
LA AURORA INTL

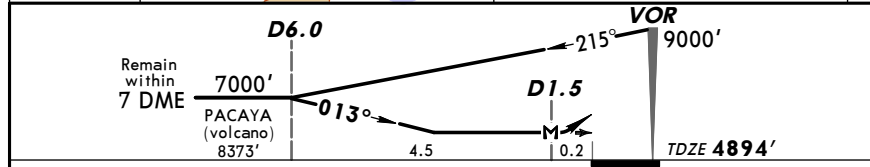
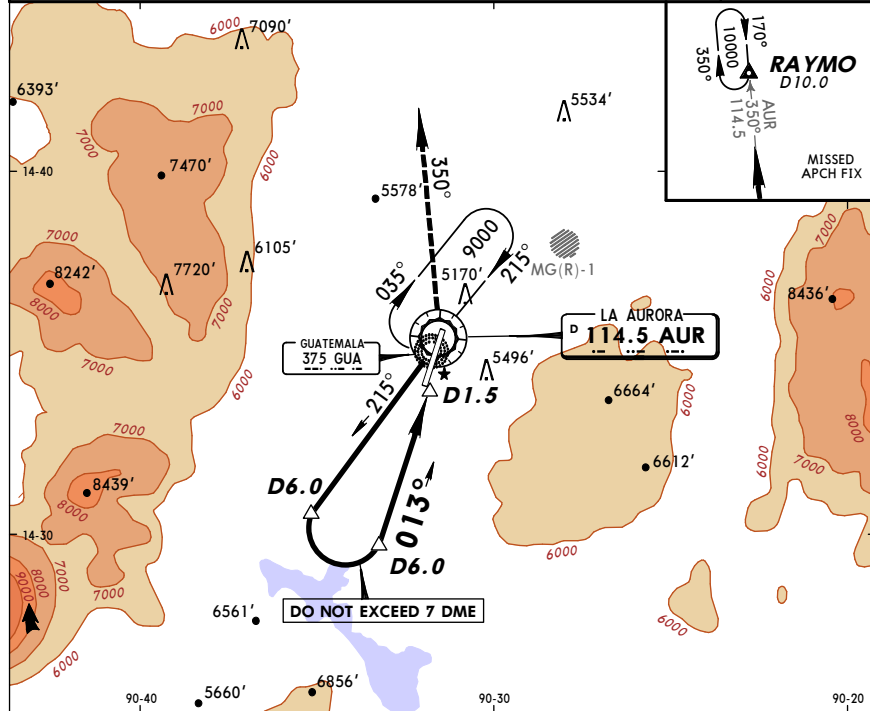
17 FEB 12 (13-3)

GUATEMALA CITY, GUATEMALA
VOR DME-2 Rwy 01

ATIS 127.65		LA AURORA Approach (*R) 119.3		LA AURORA Tower 118.1		Ground 121.9	
VOR AUR 114.5	Final Apch Crs 013°	No FAF	MDA(H) 5340' (446')	Apt Elev 4952'	TDZE 4894'		

MISSED APCH: Climb on course of 013° until reaching AUR VOR, then LEFT turn outbound on AUR VOR R-350 and continue climbing until reaching 10000' at RAYMO INT/D10.0 and hold. Request instructions from APP.

Alt Set: INCHES Trans level: FL 200 Trans alt: 19000' MSA AUR VOR



SALS	013°	AUR	AUR	10000'
REIL PAPI	↑	114.5	114.5	↑
MAP at D1.5			R-350	

STRAIGHT-IN LANDING RWY 01		CEILING REQUIRED	CIRCLE-TO-LAND	
MDA(H) 5340' (446')			Not Authorized East of Rwy	
CEILING-VISIBILITY		ALS out	Max Kts	MDA(H) CEIL-VIS
A	500'-1		90	5460' (508') 600'-1
B			120	5460' (508') 600'-1 1/2
C			140	5460' (508') 800'-2 1/4
D	500'-1 1/2		165	5680' (728') 800'-2 1/4

CHANGES: Transition altitude, ATIS frequency, TDZE.

MGGT/GUA
LA AURORA INTL

17 FEB 12 (13-4)

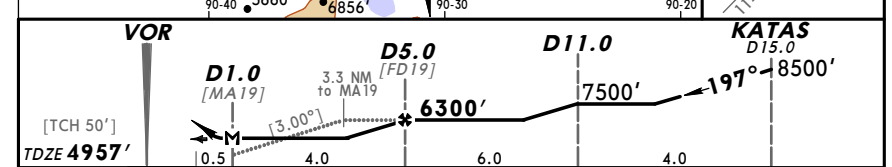
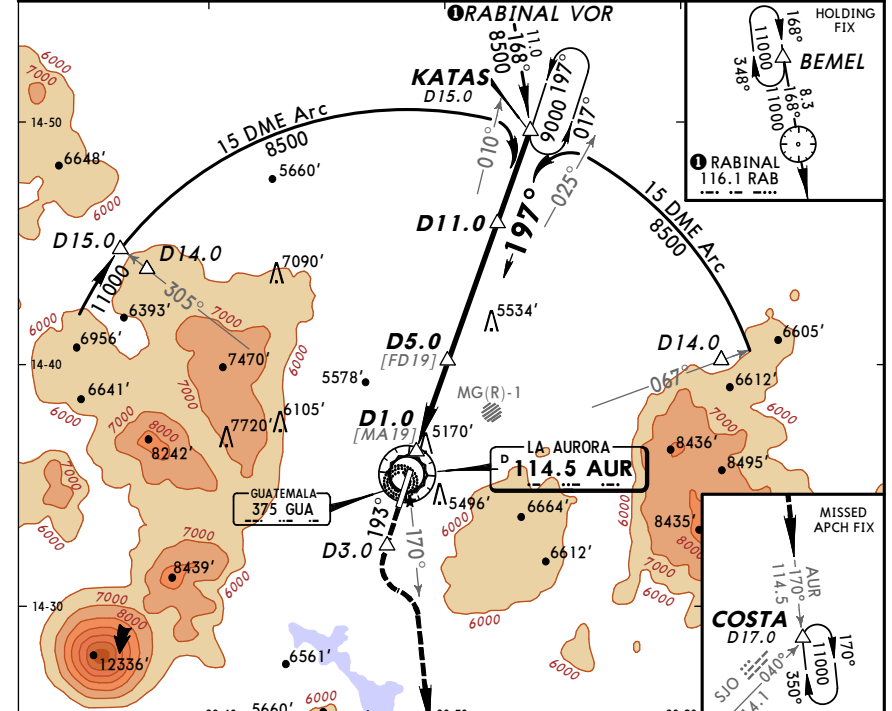
GUATEMALA CITY, GUATEMALA
VOR DME Rwy 19

ATIS 127.65		LA AURORA Approach (*R) 119.3		LA AURORA Tower 118.1		Ground 121.9	
VOR AUR 114.5	Final Apch Crs 197°	Minimum Alt D5.0 6300' (1343')	MDA(H) 5440' (483')	Apt Elev 4952'	TDZE 4957'		

MISSED APCH: Climb on course of 193° until 3 NM SOUTH of AUR VOR, then turn LEFT to intercept AUR VOR R-170 outbound and continue climbing until reaching 11000' at COSTA INT/D17.0 and hold. Request instructions from APP.

Alt Set: INCHES Trans level: FL 200 Trans alt: 19000' MSA AUR VOR

1. VGSI and descent angles not coincident.



SALS	197°	AUR	AUR	3.0 NM
REIL PAPI	↑	114.5	114.5	↑
MAP at D1.0			R-170	

STRAIGHT-IN LANDING RWY 19		CEILING REQUIRED	CIRCLE-TO-LAND	
MDA(H) 5440' (483')			Not Authorized East of Rwy	
CEILING-VISIBILITY		ALS out	Max Kts	MDA(H) CEIL-VIS
A	500'-1		90	5520' (568') 600'-1
B			120	5620' (668') 700'-1
C	500'-1 1/4		140	5620' (668') 700'-1 3/4
D	500'-1 1/2		165	5860' (908') 1000'-3

CHANGES: Transition altitude, ATIS frequency, TDZE.

MGGT/GUA
LA AURORA INTL

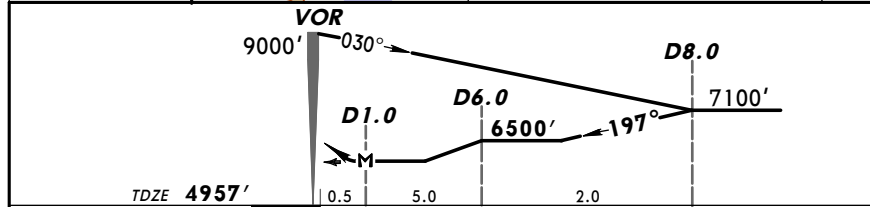
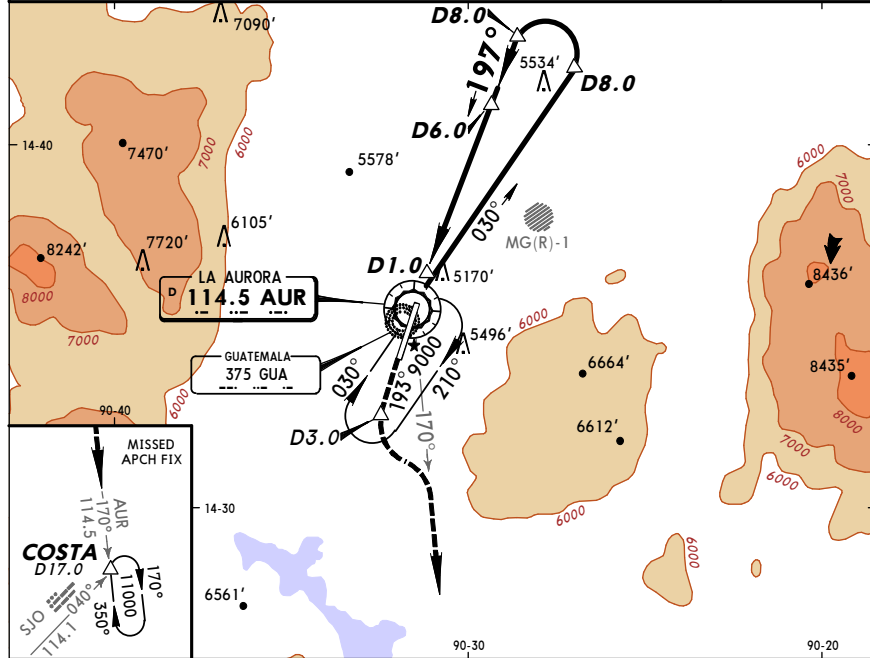
17 FEB 12 **(13-5)**

GUATEMALA CITY, GUATEMALA
VOR Rwy 19

ATIS 127.65	LA AURORA Approach (*R) 119.3	LA AURORA Tower 118.1	Ground 121.9
VOR AUR 114.5	Final Apch Crs 197°	Minimum Alt D6.0 6500' (1543')	MDA(H) 5860' (903')
Apt Elev 4952'		TDZE 4957'	

MISSED APCH: Climb on course of 193° until 3 NM SOUTH of AUR VOR, then turn LEFT to intercept AUR VOR R-170 outbound and continue climbing until reaching 11000' at COSTA INT/D17.0 and hold. Request instructions from APP.

Alt Set: INCHES Trans level: FL 200 Trans alt: 19000' MSA AUR VOR



MAP at D1.0		SALS	REIL PAPI	↑ on 193° until SOUTH AUR VOR	3.0 NM
-------------	--	------	-----------	-------------------------------	--------

STRAIGHT-IN LANDING RWY 19		CEILING REQUIRED		CIRCLE-TO-LAND	
MDA(H) 5860' (903')		Not Authorized East of Rwy		Not Authorized East of Rwy	
A	B	C	D	A	B
1000' - 1 1/4	1000' - 2 3/4	1000' - 3	5860' (908')	1000' - 1 1/4	1000' - 2 3/4
1000' - 1 1/4	1000' - 2 3/4	1000' - 3	5860' (908')	1000' - 1 1/4	1000' - 2 3/4
1000' - 1 1/4	1000' - 2 3/4	1000' - 3	5860' (908')	1000' - 1 1/4	1000' - 2 3/4
1000' - 1 1/4	1000' - 2 3/4	1000' - 3	5860' (908')	1000' - 1 1/4	1000' - 2 3/4

CHANGES: Transition altitude, ATIS frequency, TDZE.

MGGT/GUA
LA AURORA INTL

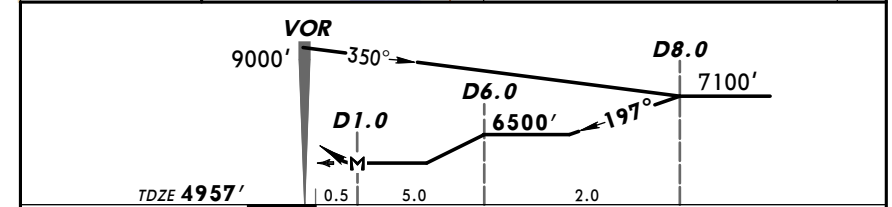
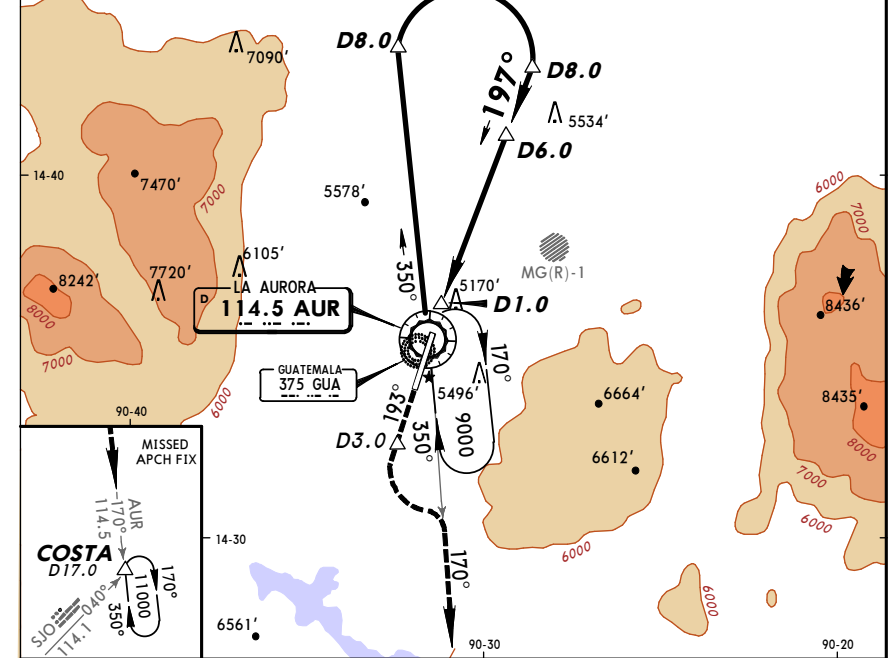
17 FEB 12 **(13-6)**

GUATEMALA CITY, GUATEMALA
VOR DME-3 Rwy 19

ATIS 127.65	LA AURORA Approach (*R) 119.3	LA AURORA Tower 118.1	Ground 121.9
VOR AUR 114.5	Final Apch Crs 197°	Minimum Alt D6.0 6500' (1543')	MDA(H) 5440' (483')
Apt Elev 4952'		TDZE 4957'	

MISSED APCH: Climb on course of 193° until 3 NM SOUTH of AUR VOR, then turn LEFT to intercept AUR VOR R-170 outbound and continue climbing until reaching 11000' at COSTA INT/D17.0 and hold. Request instructions from APP.

Alt Set: INCHES Trans level: FL 200 Trans alt: 19000' MSA AUR VOR



MAP at D1.0		SALS	REIL PAPI	↑ on 193° until SOUTH AUR VOR	3.0 NM
-------------	--	------	-----------	-------------------------------	--------

STRAIGHT-IN LANDING RWY 19		CEILING REQUIRED		CIRCLE-TO-LAND	
MDA(H) 5440' (483')		Not Authorized East of Rwy		Not Authorized East of Rwy	
A	B	C	D	A	B
500' - 1	500' - 1 1/4	500' - 1 1/2	5860' (908')	1000' - 1 1/4	1000' - 2 3/4
500' - 1	500' - 1 1/4	500' - 1 1/2	5860' (908')	1000' - 1 1/4	1000' - 2 3/4
500' - 1	500' - 1 1/4	500' - 1 1/2	5860' (908')	1000' - 1 1/4	1000' - 2 3/4
500' - 1	500' - 1 1/4	500' - 1 1/2	5860' (908')	1000' - 1 1/4	1000' - 2 3/4

CHANGES: Transition altitude, ATIS frequency, TDZE.