

LEG 06

Partenza: **SKOE Orocué**

Arrivo: **SKBO Bogotá**

SKOE Position: N 4° 47' 31" - W 71° 21' 24"

Altitude: 551 ft / 168 m - Magnetic Variation: 7,1° West

SKOE Runway information:

Number	Category	Heading	Length	Width	Surface
04	n/a	41	4856 ft / 1480 m	82 ft / 25 m	Asphalt
22	n/a	221	4856 ft / 1480 m	82 ft / 25 m	Asphalt

SKBO Position: N 4° 42' 6" - W 74° 8' 49"

Altitude: 8361 ft / 2548 m - Magnetic Variation: 5,121° West

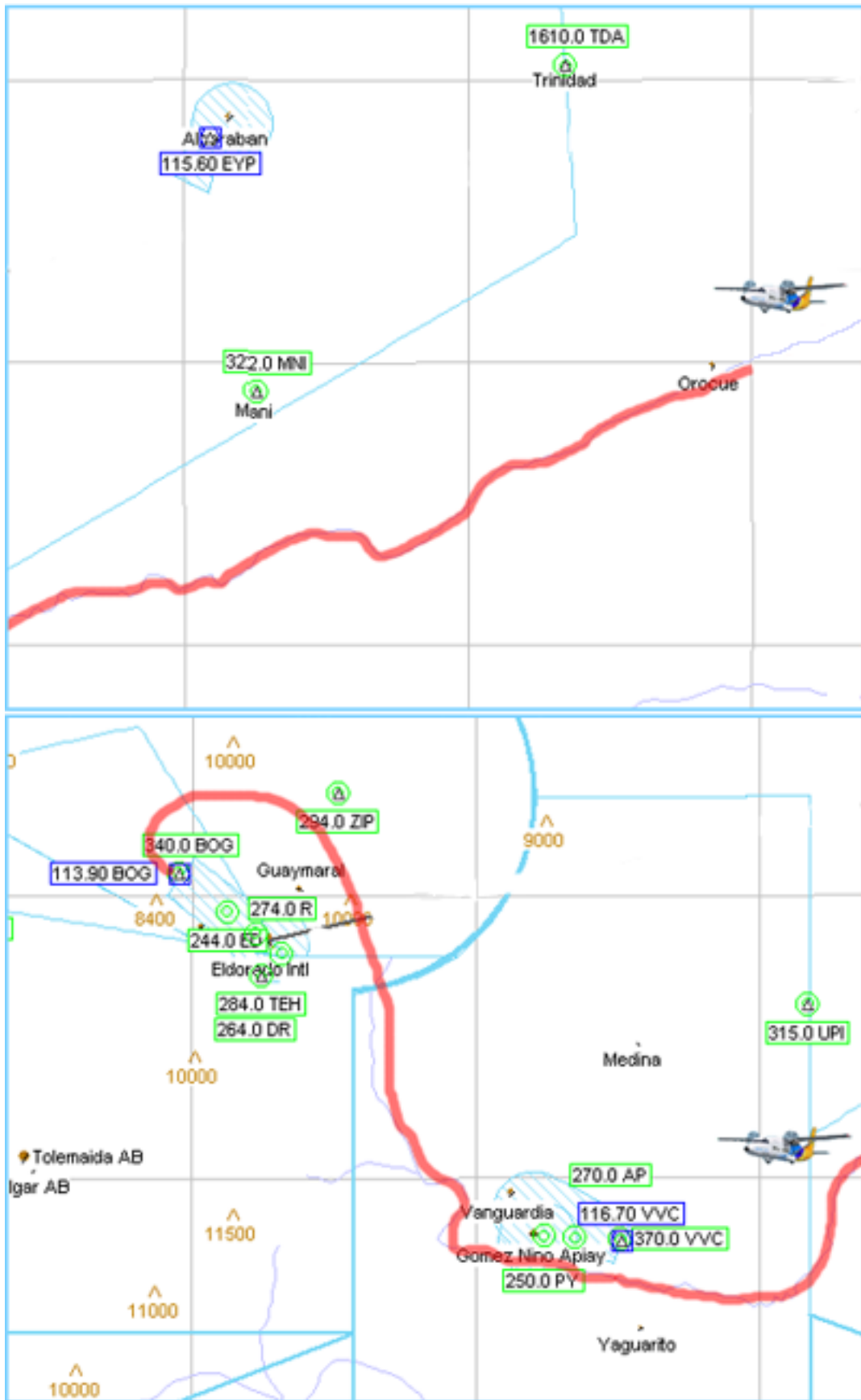
Name	Frequency	Callsign
Bogota Center	125,1	SKED_CTR
Bogota Approach	121,3	SKBO_APP
Bogota Departure	121,3	SKBO_DEP
Bogota Tower	118,1	SKBO_TWR
Bogota Ground	122,75	SKBO_GND
Bogota Clearance Delivery	121,8	SKBO_DEL

Runway information:

Number	Category	Heading	Length	Width	Surface
12	n/a	135	3423 ft / 1043 m	98 ft / 30 m	Asphalt
13	n/a	135	12467 ft / 3800 m	157 ft / 48 m	Asphalt
13L	n/a	132	12467 ft / 3800 m	157 ft / 48 m	n/a
13R	n/a	132	12467 ft / 3800 m	148 ft / 45 m	n/a
30	n/a	315	3423 ft / 1043 m	98 ft / 30 m	Asphalt
31	n/a	315	12467 ft / 3800 m	157 ft / 48 m	Asphalt
31L	n/a	312	12467 ft / 3800 m	148 ft / 45 m	n/a
31R	n/a	312	12467 ft / 3800 m	157 ft / 48 m	n/a

Approach information:

Number	Type	Id	Frequency	Heading	Angle	Range
13	ILS	IEDR	109,9	n/a	n/a	n/a
13L	ILS	IEDR	109,9	132	n/a	16 nm / 26 km
13R	n/a	IADO	110,7	n/a	n/a	16 nm / 26 km

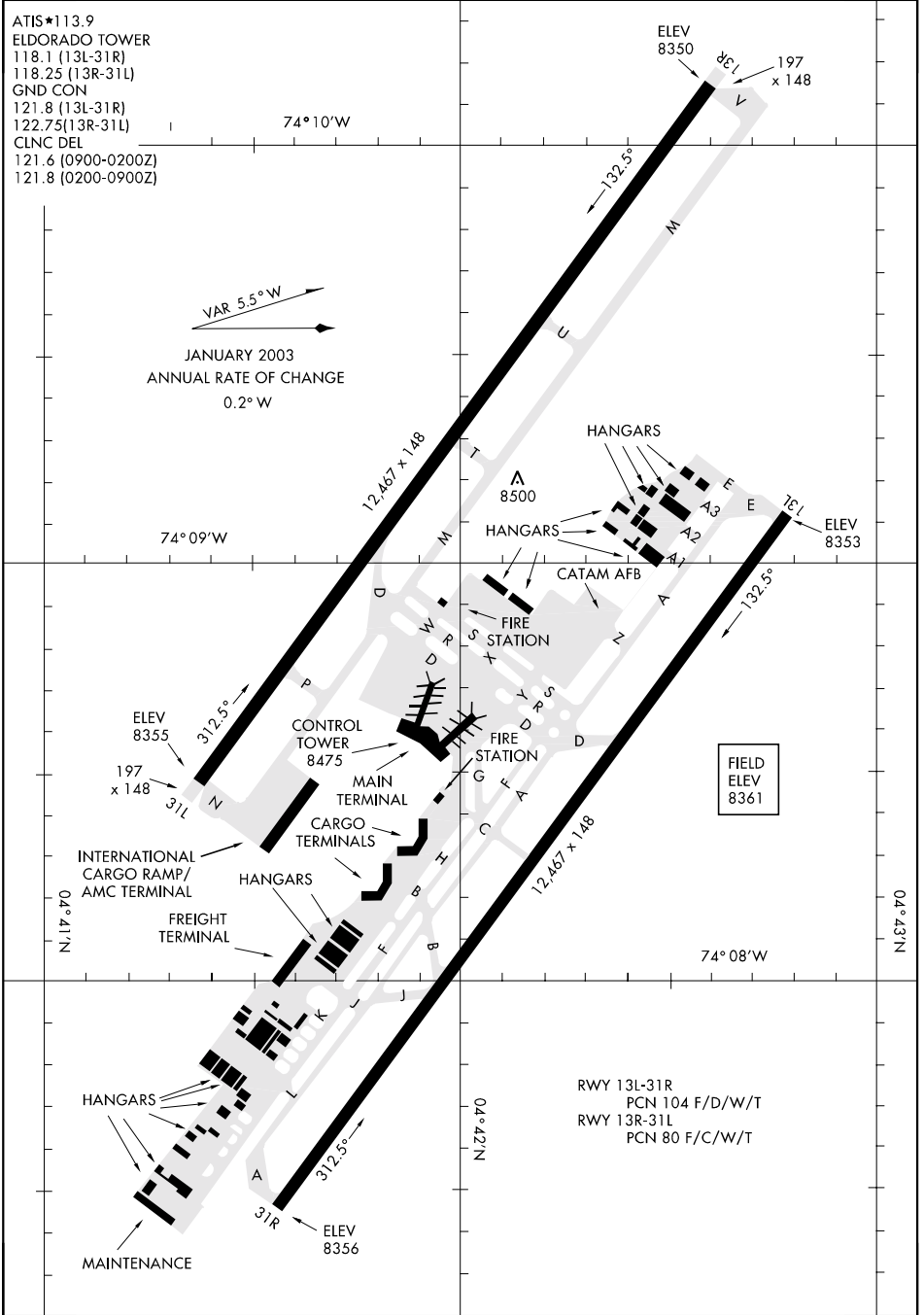


AIRPORT DIAGRAM

AFD-2311 [USAF]

ELDORADO INTL (SKBO)

BOGOTA, COLOMBIA



AIRPORT DIAGRAM

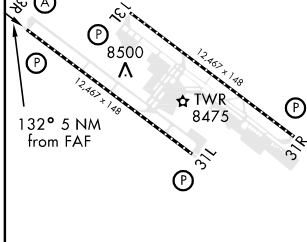
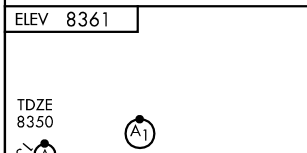
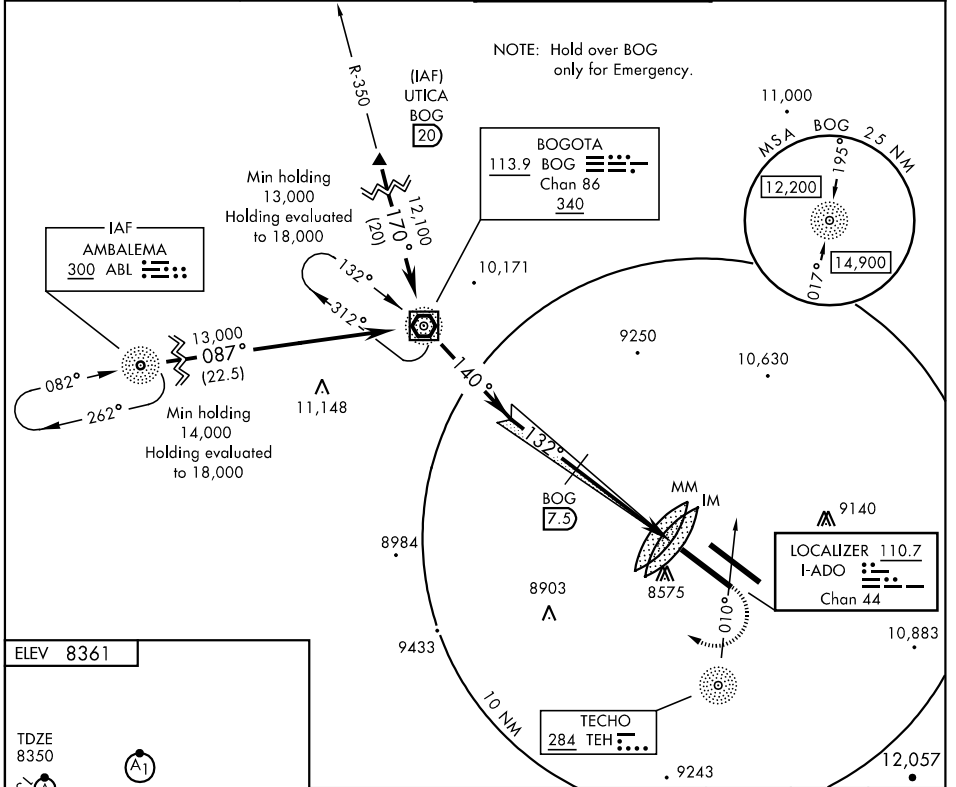
WGS DATUM

BOGOTA, COLOMBIA
ELDORADO INTL (SKBO)

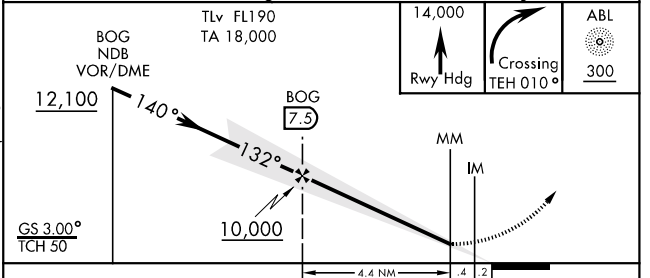
LOC I-ADO 110.7 Chan 44	APCH CRS 132°	Rwy Idg 12,467 TDZE 8350 Arpt Elev 8361	[USAF] AL-2311 (DAAC)	ELDORADO INTL (SKBO)
--------------------------------------	-------------------------	--	-----------------------	----------------------

ALSF-2
 MISSED APPROACH: Climb on runway heading until crossing TEH NDB bearing 010°, then turn right to ABL NDB and hold at 14,000 and await ATC instructions.

ATIS ★ 113.9	BOGOTA APP CON 119.5 121.3	ELDORADO TOWER 118.1	GND CON 121.8
------------------------	--------------------------------------	--------------------------------	-------------------------



FAF to MAP 4.8 NM					
Knots	60	90	120	150	180
Min:Sec	4:48	3:12	2:24	1:55	1:36



TLv FL190 TA 18,000	14,000 Rwy Hdg	ABL 300		
BOG NDB VOR/DME 12,100	BOG 7.5	10,000		
GS 3.00° TCH 50	140°	132°		
CATEGORY	A	B	C	D
S-ILS 13R	8550-1200m	200 (200-1200m)		
S-LOC 13R	8750-1200m	400 (400-1200m)		
CIRCLING	NOT AUTHORIZED			