



FLIGHT OIL04

Departure: KMIA Miami Intl (USA)

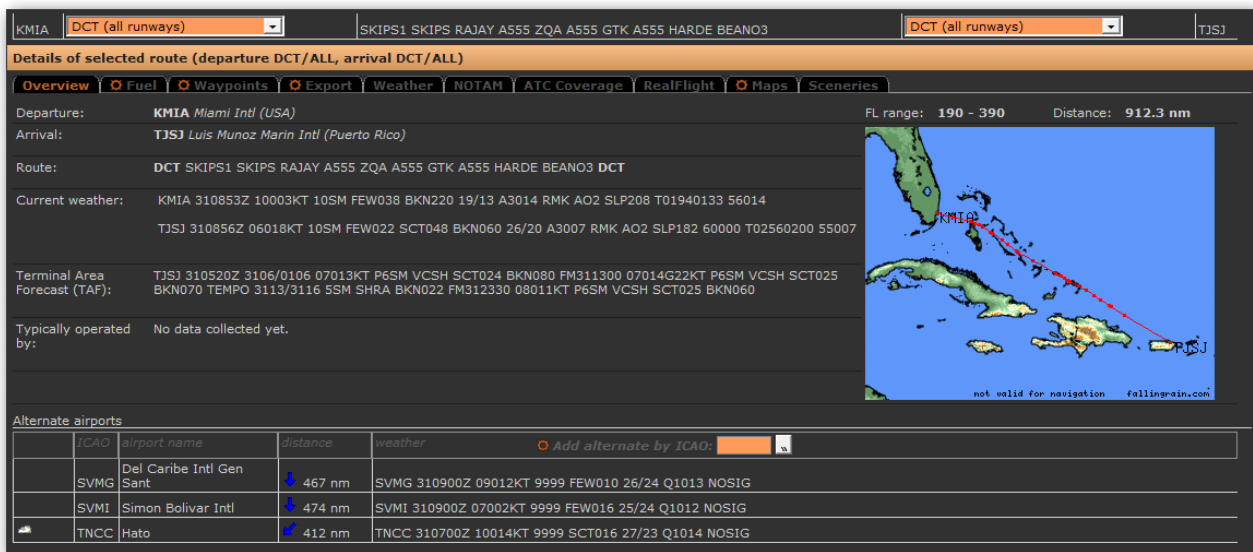
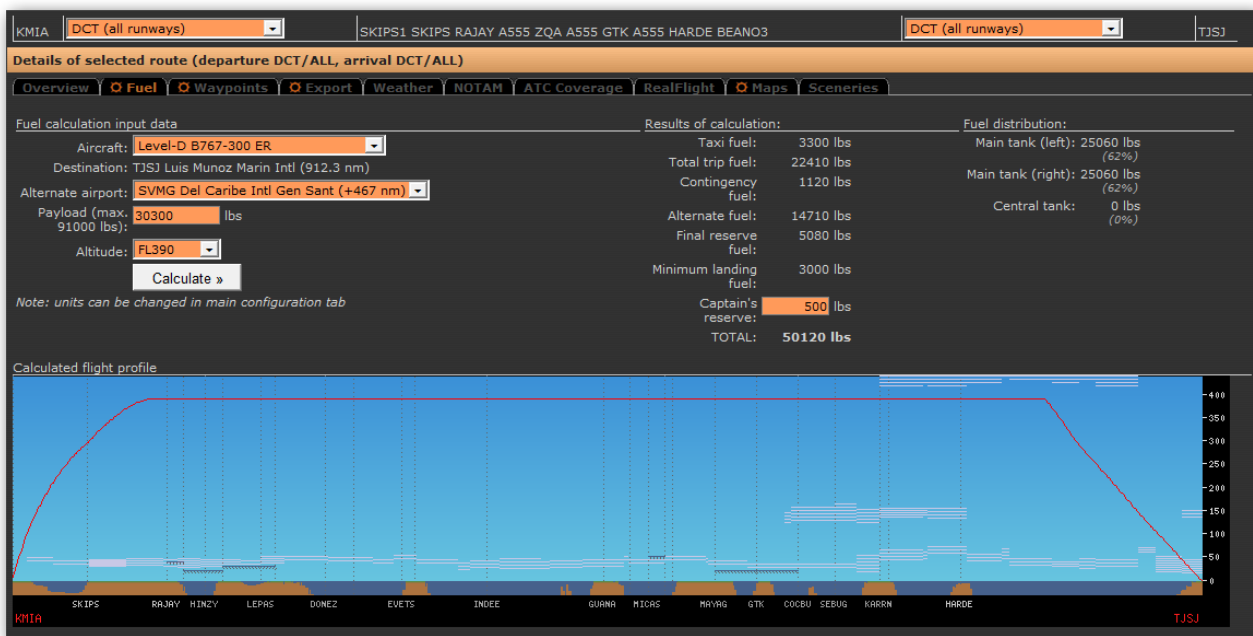
FL range: 190 - 390 Distance: 912.3 nm

Arrival: TJSJ Luis Munoz Marin Intl (Puerto Rico)

Route: SKIPS RAJAY A555 ZQA A555 GTK A555 HARDE

ACF: BOEING 767-300ERF





Cpt Luca De Battista F/O _____

DEP time (sched/act)	1200z _____
ARR time (sched/act)	1434z _____
Payload	30 300 lbs
Zero fuel weight	227 300 lbs
Fuel on board	50 120 lbs
Take-off weight	274 120 lbs
Forecast avg wind	000/0
Final fuel	_____
Fuel used	_____
Total block time	_____

Route Details:

Position	MagH	Dist	Time	Fuel Rem
Coordinates	FIR	RDist	Winds	
KMIA	111°		1226	46.8
N2547.7 W08017.4	KZMA	910	0/0	
SKIPS	112°	57	1236	42.0
N2533.2 W07916.5		853	0/0	
RAJAY	120°	61	1244	40.0
N2518.0 W07811.2	MYNN	792	0/0	
PRUNE	120°	13	1246	39.7
N2512.9 W07757.4		779	0/0	
HINZY	120°	16	1248	39.4
N2506.9 W07741.0		763	0/0	
ZQA /112.70	134°	14	1250	39.1
N2501.5 W07726.8		749	0/0	
LEPAS	134°	29	1254	38.4
N2444.4 W07700.5		720	0/0	
BOSAR	134°	11	1255	38.2
N2438.2 W07651.0		709	0/0	
DONEZ	135°	38	1300	37.4
N2415.8 W07616.9		671	0/0	
GEROT	135°	22	1303	36.9
N2402.7 W07557.2	K7	649	0/0	
EVETS	135°	37	1308	36.1
N2340.7 W07524.5		612	0/0	
DUKKY	128°	10	1309	35.9
N2334.8 W07515.8	MY	602	0/0	
INDEE	129°	55	1316	34.7
N2308.4 W07423.4		547	0/0	
GUANA	130°	89	1328	32.8
N2224.4 W07259.1		458	0/0	
BTLER	128°	20	1330	32.4
N2214.4 W07240.1	MB	438	0/0	
MICAS	130°	14	1332	32.0
N2207.9 W07226.7		424	0/0	
EGANN	130°	13	1334	31.8
N2201.3 W07214.0		411	0/0	
RATTL	130°	6	1335	31.6
N2158.2 W07208.1	K7	405	0/0	
MAYAG	130°	32	1339	31.0
N2142.3 W07137.9	MB	373	0/0	
GTK /114.20	134°	32	1343	30.3
N2126.4 W07108.1		341	0/0	
COCBU	134°	32	1347	29.6
N2109.0 W07039.3		309	0/0	
SEBUG	135°	28	1351	29.0
N2053.9 W07014.5		281	0/0	
KARRN	135°	34	1355	28.3
N2035.3 W06944.3		247	0/0	
GRADI	136°	7	1356	28.1
N2031.3 W06937.9		240	0/0	

Flight Progress Card

Callsign TAF232 From KMIA To TJSJ
Altitude FL390 Aircraft B763/1d Reg #

Departure Weather

KMIA 310853Z 10003KT 10SM FEW038 BKN220 19/13
A3014 RMK A02 SLP208 T01940133 56014

Route

SKIPS RAJAY A555 ZQA A555 GTK A555 HARDE

Clearance

ATIS _____ SID _____ Climb _____
Squawk _____ Departure freq _____
Instructions _____
Taxi via _____ Rwy _____

Enroute

Approach

STAR _____ Rwy _____ QNH _____

Landing

ATIS _____ Wind _____ @ _____ Vref _____ Flaps _____
Taxi via _____ Stand _____

Arrival & Alternates

TJSJ Luis Munoz Marin Intl (elev 9 ft)

METAR: TJSJ 310856Z 06018KT 10SM FEW022
SCT048 BKN060 26/20 A3007 RMK A02
SLP182 60000 T02560200 55007
TAF: TJSJ 310520Z 3106/0106 07013KT P6SM
VCSH SCT024 BKN080
FM311300 07014G22KT P6SM VCSH SCT025
BKN070
TEMPO 3113/3116 5SM SHRA BKN022
FM312330 08011KT P6SM VCSH SCT025
BKN060

SVMG Del Caribe Intl Gen Sant [↓ 467 nm]
SVMG 310900Z 09012KT 9999 FEW010 26/24 Q1013
NOSIG

SVMI Simon Bolivar Intl [↓ 474 nm]
SVMI 310900Z 07002KT 9999 FEW016 25/24 Q1012
NOSIG
Route: ARMUR UG432 MIQ

TNCC Hato [↘ 412 nm]
TNCC 310700Z 10014KT 9999 SCT016 27/23 Q1014
NOSIG
Route: SCAPA UG431 PJG

Position	MagH	Dist	Time	Fuel Rem
Coordinates	FIR	RDist		
HARDE	133°	55	1403	27.0
N2000.4 W06849.0	-	185	0/0	
TJSJ	---°	185	1434	24.4
N1826.4 W06600.1	TJZS	0	0/0	

KMIA/MIA

Apt Elev 9'
N25 47.7 W080 17.4

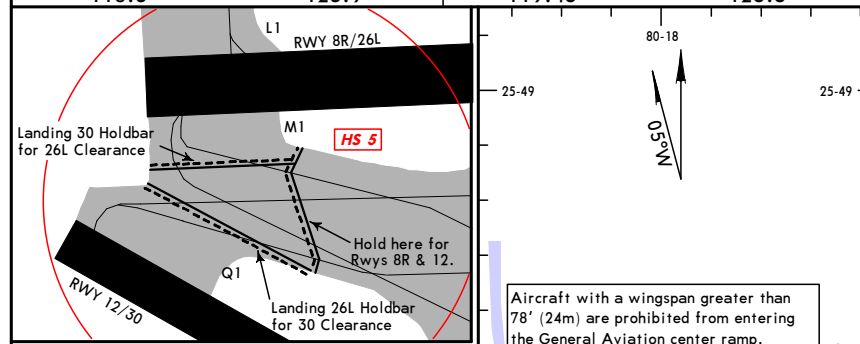
MIAMI, FLA

MIAMI INTL

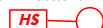
28 SEP 12

(10-9)

Arrival		D-ATIS	Departure	ACARS: D-ATIS PDC TWIP	MIAMI Clearance	Ground Rwys 8L/R, 12, 26L/R		Rwys 9, 27, 30
119.15			133.67		135.35	121.8		127.5
VOT 112.0								
270°-089°		Tower			090°-269°		MIAMI Departure (R)	
118.3					123.9		270°-089°	
119.45					125.5		090°-269°	



RUNWAY INCURSION HOT SPOTS



For information only, not to be construed as ATC instructions.

HS1 Short taxi across taxiways to runway.

HS2 Short taxi across taxiways to runway.

HS3 Rwy 27 and 30 Wrong Runway Departure Risk.

HS4 Short taxiway between runways.

HS5 Two runway ends close together with multiple hold lines that are dependent upon the runway(s) in use. (SEE INSET)

LEGEND

----- Hold bars

③ Spot

POSITIVE APRON CONTROL AND PUSHBACKS

Miami Dade Aviation Department (MDAD) has implemented mandatory positive Apron and Pushback Control of the non-movement (non-FAA controlled) apron areas in the terminal area. MDAD Pushback Control has positive control of the following aircraft gates, hardstands and spots as indicated:

- Central Base- Spot 0
- South and east sides of Concourse D Spot 1
- All gates located between Concourses E and F Spots 11N, 11S
- All gates located between Concourses F and G Spot 12
- All gates located between Concourses G and H Spot 13
- All gates located between Concourses H and J Spots 14W, 14C, 14E
- East gates located on Concourse J and adjacent remote parking area Spot 15
- All gates located on Western U Cargo Area Spot 73
- All gates located on Eastern U Cargo Area Spot 75

Spots 0 and 1: Apron Control and pushback request will be made using ARINC frequency 128.02 (call sign "Miami Gates").

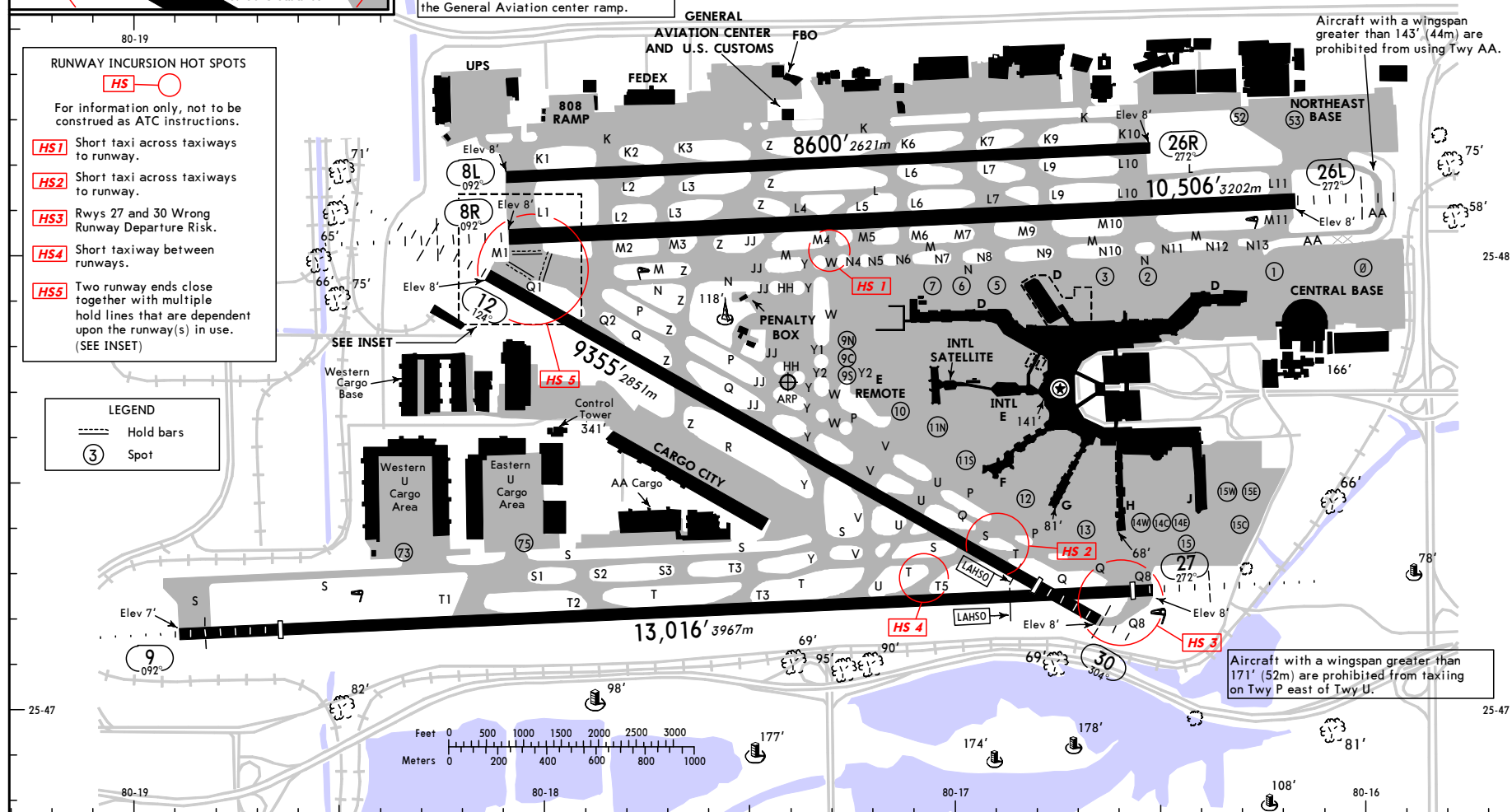
Spots 10, 11, 12 & 13: Apron Control and pushback request will be made using ARINC frequency 130.50 (call sign "Miami Gates").

Spots 14 and 15: Apron Control and pushback request will be made using ARINC frequency 132.37 (call sign "Miami Gates").

Spots 3, 5, 6, 7 & 9: American Apron Control and pushback request will be made using ARINC frequency 130.95.

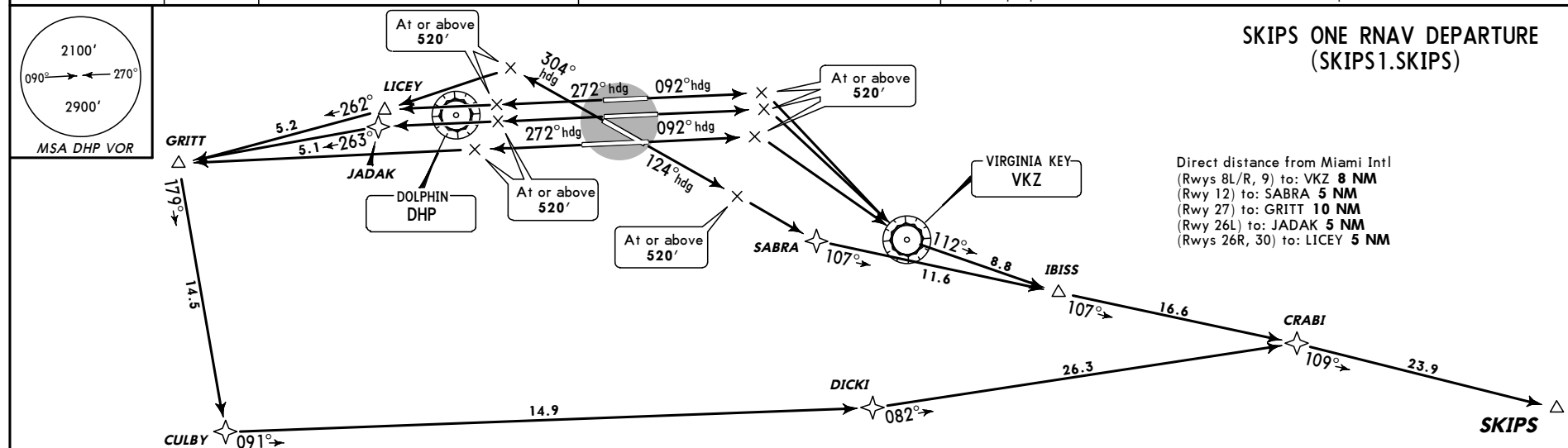
Spots 73, 75: Pushback will be made via MIAMI ATCT on frequency 121.8 or 127.5.

All aircraft requiring engine start prior to pushback must contact ARINC frequency 130.5 (call sign "Miami Gates") for startup clearance.



CHANGES: Hot spot 1 relocated, note removed, overruns removed all runways.

MIAMI Departure (R) 125.5	Apt Elev 9'	Trans level: FL180 Trans alt: 18000'	1. DME/DME/IRU or GPS required. 2. RNAV 1. 3. RADAR required.	4. For non-GPS equipped aircraft: FLL must be operational for take-off Rwy 8L/R, 9, 12; FLL and VKZ must be operational for take-off Rwy 26L/R, 27, 30. 5. Turbojet aircraft accelerate to 250 KT, if unable, advise ATC. 6. Turboprop aircraft MAINTAIN maximum forward airspeed and climb rate.
------------------------------	----------------	--------------------------------------	---	---



This SID requires take-off minimums
(for standard minimums, refer to airport chart):
Rwy 8L: 300-1 1/4 with minimum obstacle climb
of 221' per NM to 1200', or standard (or lower
than standard, if authorized) with minimum
obstacle climb of 382' per NM to 300', minimum
ATC climb of 500' per NM to 520'.

Rwy 8R: Standard (or lower than standard, if
authorized) with minimum obstacle climb of 237'
per NM to 1200', minimum ATC climb of 500'
per NM to 520'.

Rwy 9: Standard (or lower than standard, if
authorized) with minimum obstacle climb of 233'
per NM to 1200', minimum ATC climb of 500'
per NM to 520'.

Rwy 12: Standard (or lower than standard, if
authorized) with minimum obstacle climb of 229'
per NM to 1200', minimum ATC climb of 500'
per NM to 520'.

Rwys 26L/R, 27, 30: Standard (or lower than
standard, if authorized) with minimum ATC
climb of 300' per NM to 520'.

Gnd speed-KT	75	100	150	200	250	300
221' per NM	276	368	553	737	921	1105
229' per NM	286	382	573	763	954	1145
233' per NM	291	388	583	777	971	1165
237' per NM	296	395	593	790	988	1185
300' per NM	375	500	750	1000	1250	1500
382' per NM	478	637	955	1273	1592	1910
500' per NM	625	833	1250	1667	2083	2500

RWY	INITIAL CLIMB	ALTITUDE
8L/R, 9	Climb heading 092° to 520', then RIGHT turn direct VKZ, then via depicted route to SKIPS.	MAINTAIN 5000' or ATC assigned altitude
12	Climb heading 124° to 520', then direct SABRA, then via depicted route to SKIPS.	
26L	Climb heading 272° to 520', then LEFT turn direct JADAK, then via depicted route to SKIPS.	
26R	Climb heading 272° to 520', then LEFT turn direct LICEY, then via depicted route to SKIPS.	
27	Climb heading 272° to 520', then LEFT turn direct GRITT, then LEFT turn via track 179° to CULBY, then via depicted route to SKIPS.	
30	Climb heading 304° to 520', then LEFT turn direct LICEY, then via depicted route to SKIPS.	
ROUTING		
EXPECT further clearance to filed altitude within 10 minutes after departure.		

OBSTACLES

Rwy 8L: Building 3391' from DER, 1024' LEFT of centerline, 160' AGL/172' MSL. Glideslope antenna 804' from DER, 501' RIGHT of centerline, 32' AGL/46' MSL. Multiple towers and buildings beginning 1350' from DER, 691' LEFT of centerline, up to 150' AGL/164' MSL.

Rwy 8R: Tree 4064' from DER, 959' RIGHT of centerline, 98' AGL/112' MSL. Antenna and multiple trees beginning 2719' from DER, 194' LEFT of centerline, up to 85' AGL/98' MSL.

Rwy 9: Light 1232' from DER, 785' LEFT of centerline, 39' AGL/48' MSL. Windsock 22' from DER, 438' RIGHT of centerline, 21' AGL/30' MSL.

Rwy 12: Railroad beginning 4' from DER, 356' RIGHT of centerline, 23' AGL/28' MSL. Building and tree beginning 1064' from DER, 118' RIGHT of centerline, up to 94' AGL/108' MSL. Windsock 681' from DER, 345' LEFT of centerline, 21' AGL/30' MSL. Rwy 26L: Tower and multiple trees beginning 1306' from DER, 638' RIGHT of centerline, up to 63' AGL/77' MSL. Tree and light pole beginning 1773' from DER, 568' LEFT of centerline, up to 61' AGL/75' MSL. Rwy 26R: Tower, building, multiple light poles and trees beginning 741' from DER, 1' RIGHT of centerline, up to 66' AGL/80' MSL. Pole, building, and tower beginning 255' from DER, 5' LEFT of centerline, up to 34' AGL/48' MSL.

Rwy 27: Railroad, tree, and multiple light poles beginning 750' from DER, 94' LEFT of centerline, up to 62' AGL/76' MSL.

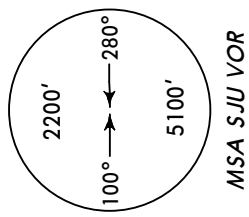
Rwy 30: Pole, multiple towers and trees beginning 1414' from DER, 189' RIGHT of centerline, up to 120' AGL/125' MSL. Tree 2058' from DER, 785' LEFT of centerline, 52' AGL/66' MSL.



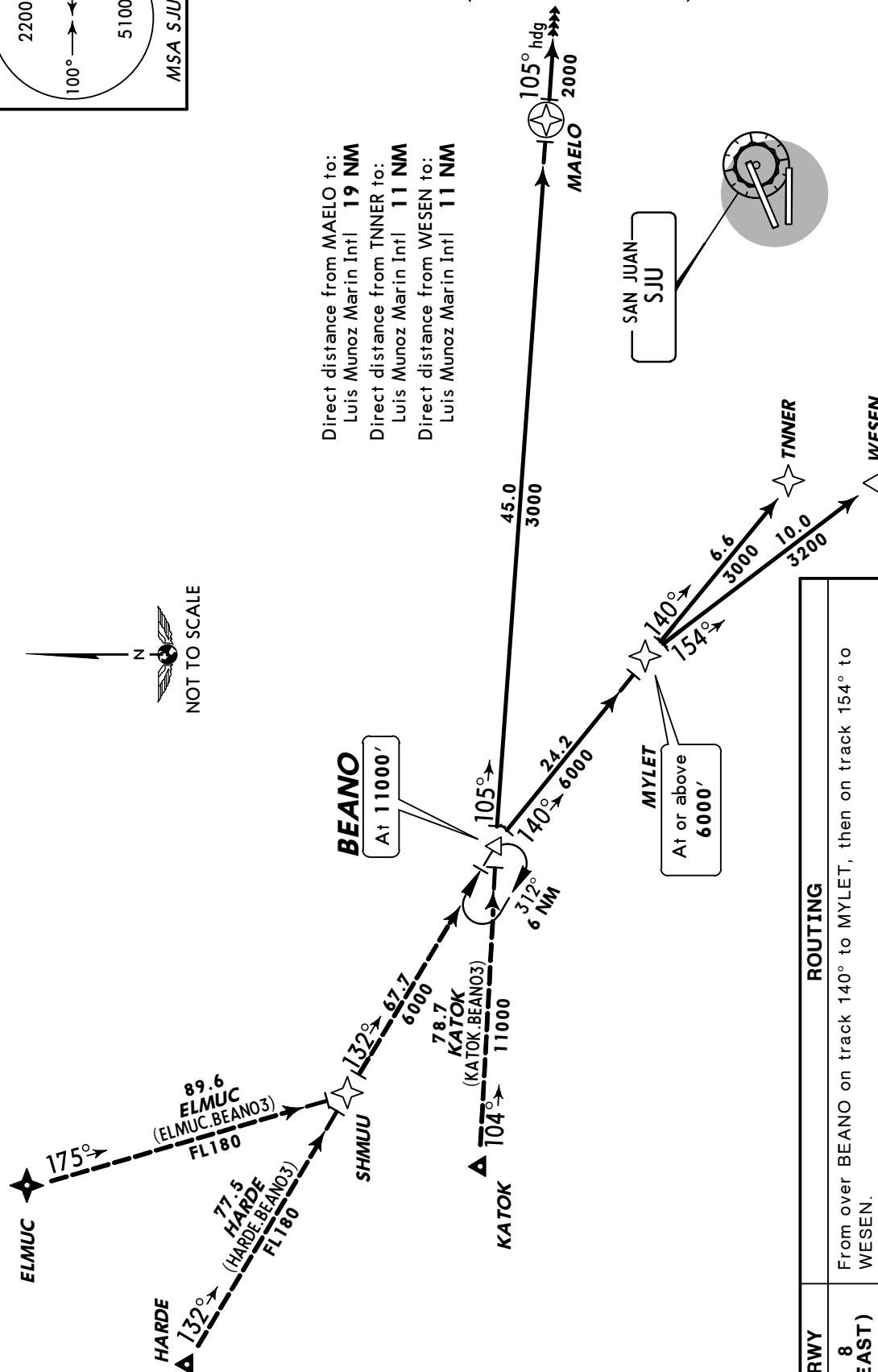
D-ATIS
125.8

Apt Elev
9'

Alt Set: INCHES
Trans level: FL 180 Trans alt: 18000'
1. GPS required.
2. RADAR required.
3. RNAV 1.
4. This STAR applicable to turbojet aircraft only.



BEANO THREE RNAV ARRIVAL (BEANO.BEANO3)



ROUTING	
RWY 8 (EAST)	From over BEANO on track 140° to MYLET, then on track 154° to WESEN.
10 (EAST)	From over BEANO on track 140° to MYLET, then on track 140° to TNNER.
26, 28 (WEST)	From over BEANO on track 105° to MAELO, then on 105° heading. EXPECT RADAR vectors.

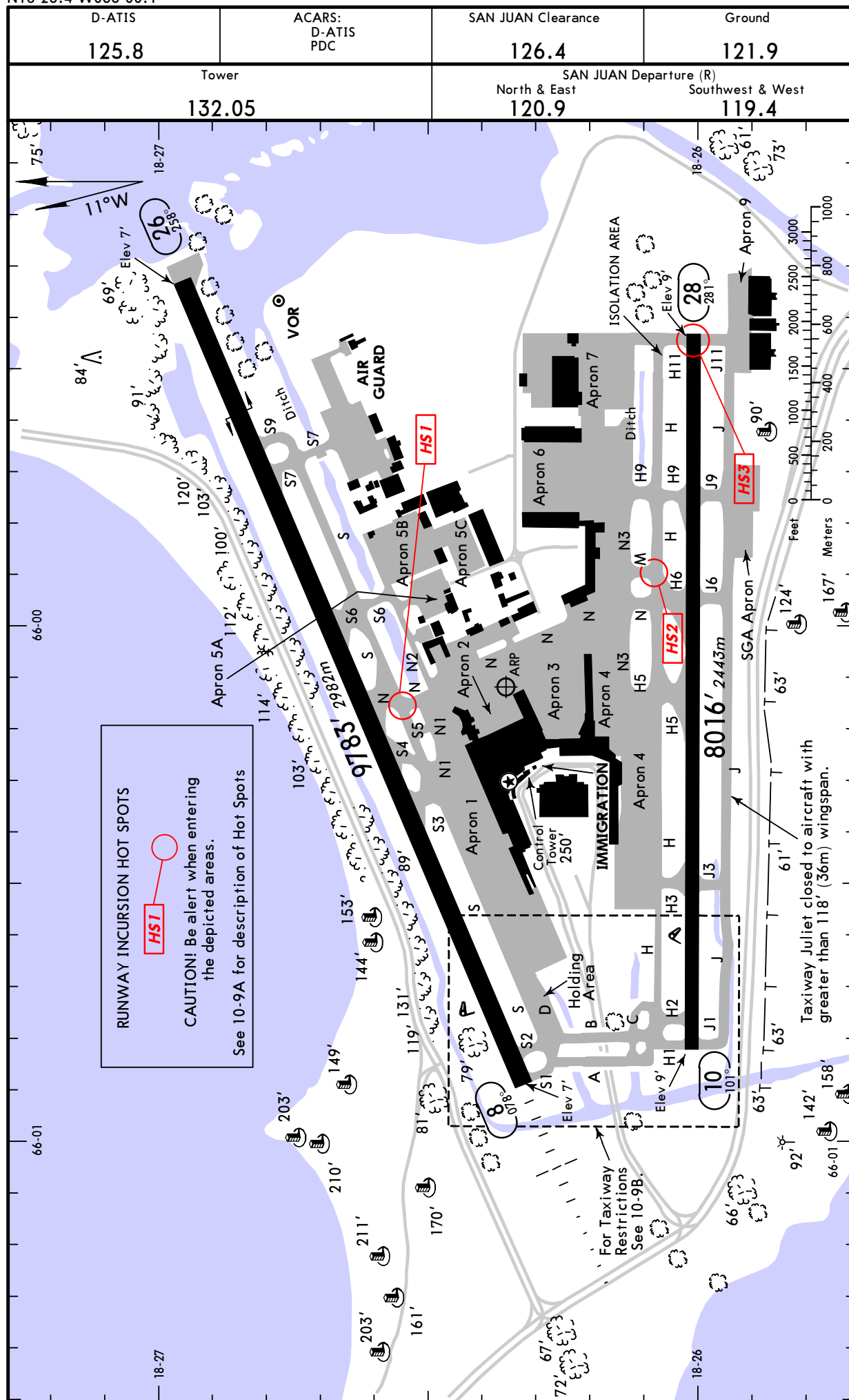
TJSJ/SJU

Apt Elev 9'
N18 26.4 W066 00.1

19 MAR 10 (10-9)

SAN JUAN, PUERTO RICO

LUIS MUNOZ MARIN INTL



[Initial Approach Charts \(11\)](#)

<u>08: ILS OR LOC RWY 08</u>	
<u>08: LAGOON VISUAL RWY 08</u>	
<u>08: NDB RWY 08</u>	
<u>08: RNAV (GPS) RWY 08</u>	
<u>08: VOR OR TACAN RWY 08</u>	
<u>10: BRIDGE VISUAL RWY 10</u>	
<u>10: ILS OR LOC RWY 10</u>	
<u>10: RNAV (GPS) RWY 10</u>	
<u>10: VOR OR TACAN RWY 10</u>	
<u>26: RNAV (GPS) RWY 26</u>	
<u>26: VOR OR TACAN RWY 26</u>	