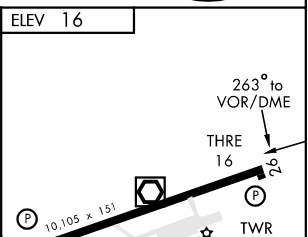
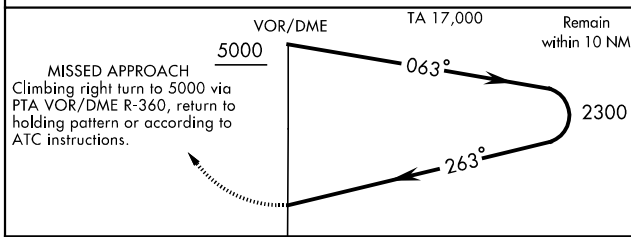
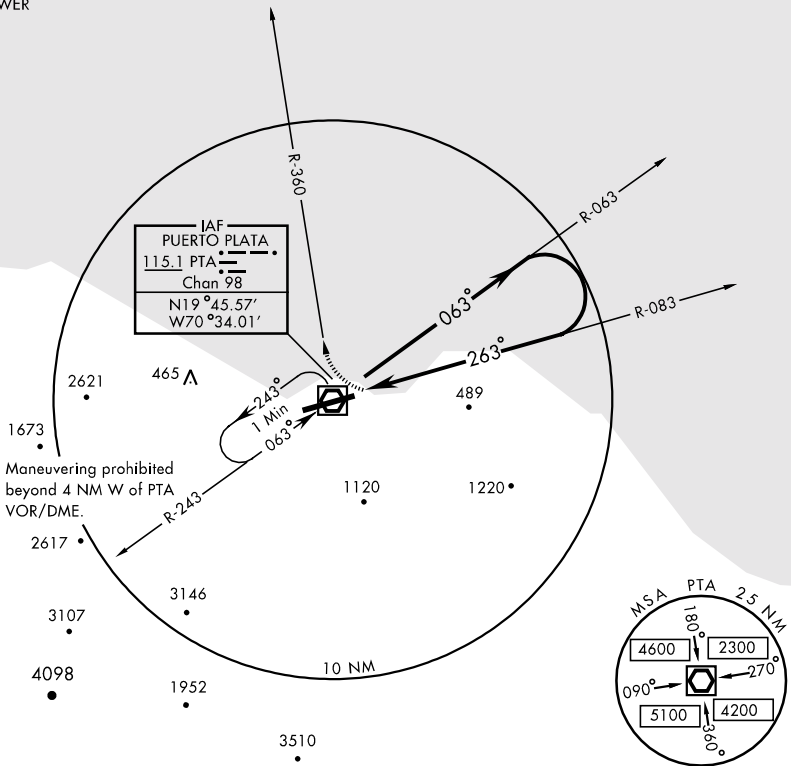


# VOR RWY 26

[USA] AL-2518 (DGAC)

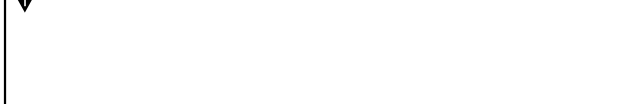
GREGORIO LUPERON INTL (MDPP)  
PUERTO PLATA, DOMINICAN REPUBLIC

PUERTO PLATA APP CON  
119.0  
PUERTO PLATA TOWER  
118.0  
GND CON  
121.9



CATEGORY	A	B	C	D	E
S-26	660-1 644 (700-1)	660-1 3/4 644(700-1 3/4)	660-2 644(700-2)	660-2 1/4 644(700-2 1/4)	660-2 1/4 644(700-2 1/4)
CIRCLING *	700-1 684(700-1)	800-1 1/4 784(800-1 1/4)	800-2 1/4 784(800-2 1/4)	900-3 884 (900-3)	

\* Circling not authorized S of Rwy 08-26.



HIRL Rwy 08-26

# VOR RWY 26

19°45'N-70°34'W

PUERTO PLATA, DOMINICAN REPUBLIC  
GREGORIO LUPERON INTL (MDPP)

